

Auction Catalog

J.A. Rogers Enterprises, Inc.

dba Mueller Farms Landscaping Company

6329 North Kirkville Road
Kirkville, NY 13082

Onsite Auction Only

Saturday, May 6, 2017, 10am ET

By order of the United States
Bankruptcy Court for the Northern
District of New York in the matter
of J.A. Rogers Enterprises, Inc., Case
No. 16-31603-5-mcr



blackbird

Auctions and Valuations

Blackbird Asset Services, LLC
5586 Main Street #204
Williamsville, NY 14221

(716) 632-1000

BlackbirdAuctions.com



Auction Bidder Agreement, J.A. Rogers Enterprises, Inc. Bankruptcy Auction May 6, 2017
Bidder and Auctioneer agree that the Terms and Conditions listed below shall govern this Auction sale:

1. All persons seeking to register to bid acknowledges acceptance of these terms of sale, and guarantees prompt payment of all purchases by cash, wire transfer, credit card or company check. Company checks will only be accepted when accompanied with a bank letter of guarantee. No items will be removed prior to full payment, with all funds having cleared our accounts.
2. The "Bidder" becomes a "Buyer" upon the Auctioneers acceptance of their bid on one or more items in the Auction sale.
3. FULL PAYMENT must be made immediately for your purchase at the Auction. This payment should be made in the form of cash, credit card (up to \$5,000 max), company check with bank letter of guarantee, cashiers check, or wire transfer (instructions on invoice). Company checks will be accepted only if accompanied by a letter from the issuing bank that reads: "(Bank Name) unconditionally guarantees payment to Blackbird Asset Services, LLC from (Purchasers Name) on account number _____ up to the amount of \$_____." This guarantee will be valid for purchases made at the JA Rogers / Mueller Farms Landscaping bankruptcy auction on May 6."
4. Items left unpaid for more than 48 hours will be resold at the risk and expense of the Buyer. In the event that a Buyer fails to pay the entire purchase price (in addition to the Buyer's premium and any applicable tax) within 48 hours or otherwise fails to comply with these Terms and Conditions, Auctioneer and the Seller may retain any deposit paid as liquidated damages without notice. Auctioneer and the Seller reserve the right to resell such items without notice, and the defaulting Buyer shall be liable to Auctioneer and Seller for any resulting deficiency, including costs incurred in storing and reselling such items.
5. Auctioneer shall charge and collect from each Buyer a 12% Buyer's premium for each sale at the Auction, in addition to the purchase price as bid. Buyers that pay by credit card will be charged a 3% convenience/credit card fee in addition to any buyers premiums so noted.
6. All items in the Auction shall be sold to the highest bidder. Auctioneer reserves the right to reject any bid that is only a minimal increase over the preceding bid, that is not commensurate with the value of the item being offered, or any bid that Auctioneer believes was made illegally or in bad faith. Further, Auctioneer may bid at the Auction on behalf of the Seller or a third party. All sales are final. No returns or refunds will be permitted.
7. Collection of applicable taxes will be in accordance with the laws of the State of NY, Onondaga County (8%). Auctioneer reserves the right to charge and collect tax on all purchases, shifting the burden of determining any 'tax exempt' status to the purchaser (if applicable). In such case tax refunds will be issued by the state.
8. For any purchase paid in cash with a value of \$10,000 or greater, Buyer is required to complete US Treasury Dept. form #8300 at the time of purchase.
9. Removal and shipment of purchased items will be the sole responsibility of the Buyer and must be completed immediately following the auction, then from Sunday May 7th through Wednesday May10th from 8:30 AM-4:30 PM. NO MATERIAL HANDLING EQUIPMENT OR TOOLS WILL BE MADE AVAILABLE BY THE SELLER OR AUCTIONEER FOR BUYERS' USE DURING ITEM REMOVAL. All Buyers and/or their agent riggers MUST comply with all insurance requirements as noted in the Auction catalog.
10. The Buyer becomes fully responsible for, and assumes all risk of loss and damage to items immediately upon acceptance of their bid. It shall be the responsibility of the Buyer to insure their purchases immediately. If the Buyer does not remove an item within the announced removal period, Auctioneer and the Seller may, in their sole discretion, deem the item to have been abandoned by the Buyer and the Buyer will have no further rights with respect to the item.
11. Any announcement made by the Auctioneer at the time and place of sale take precedence over these or any other printed terms of sale.
12. In the event of any dispute concerning the winning bid price for an item, the record kept by Auctioneer shall control. In any dispute between two or more bidders, the Auctioneers decision shall be absolute and final.
13. ALL ITEMS ARE SOLD AS IS, WHERE IS AND WITH ALL FAULTS. NEITHER SELLER NOR AUCTIONEER MAKES ANY WARRANTY, EXPRESS OR IMPLIED, AS TO THE NATURE, QUALITY, VALUE OR CONDITION OF ANY ITEM. AUCTIONEER AND SELLER EXPRESSLY DISCLAIM ANY WARRANTY OF MERCHANTABILITY, FITNESS FOR A PARTICULAR PURPOSE OR NON-INFRINGEMENT.
14. No sale shall be invalidated by reason of any defect or inaccuracy in any description or listing, and no liability shall be borne by the Auctioneer with respect to such errors. All information has been obtained from sources generally believed to be reliable, but the accuracy cannot be guaranteed or warranted by the Auctioneer. Bidder acknowledges it is their responsibility to inspect all items and to make their own inquires.
15. The aggregate respective liability of Seller or Auctioneer in respect of any other loss or damage suffered by a Buyer and arising out of or in connection with these Terms and Conditions or arising out of or in any way connected with a Buyer's participation in the Auction, whether in contract, tort (including negligence) or for breach of statutory duty or in any other way, shall not exceed (i) in the case of the Seller, the amount of the purchase price paid by the Buyer; and (ii) in the case of the Auctioneer, the Buyer's premium paid by the Buyer, in each case in respect of the goods which are the subject of the claim.
16. Computers, drives and other electronic equipment may contain copywritten software that is governed by a license agreement issued to a third party. In such event the Buyer acknowledges that said software and license agreement(s) are not included in their purchase(s). Buyer guarantees the destruction of any personally identifiable information that may be stored on such devices, and shall indemnify and hold harmless the Auction Company and their Seller from any claims, suits or other actions brought against them that relates in any way to personally identifiable information or any other data that remains on such devices, latent or obvious.
17. Buyers acknowledge that an Auction site or the Seller's site is a potentially dangerous place. Flammable, noxious, corrosive and pressurized substances may be present. Heavy equipment may be operated, and electrical circuits may be live. Every person enters such site at his or her own risk with notice of the condition of the premises and the activities that will be or have been conducted on the premises. Buyers shall so advise their agents and employees. No person shall have any claim against Auctioneer, the Seller or their respective agents or employees for any injuries sustained or for damages to or loss of person or property that may occur at such site.
18. These Terms and Conditions are incorporated and merged with any sale specific Terms and Conditions that may be distributed via our website and or at the physical auction location. Any announcement made by the Auctioneer at the time and place of sale take precedence over these or any other printed terms of sale.

Terms and Conditions for onsite bankruptcy auction of J.A. Rogers Enterprises, Inc. dba Mueller Farms Landscaping, Bk. No. 16-31603-5-MCR. Sale date May 6, 2017 beginning at 10:00 AM on location at 6329 Kirkville Rd. North, Kirkville, NY 13082. Terms Version 2, 04-24-2017.

REMOVAL DATES

**Immediately following the auction for
smalls and hand carry items ONCE PAID
IN FULL.**

**Open removal will be from Sunday,
May, 7 to Wednesday, May, 10 from
8:30–4:30 each day.**

**Please contact our office at 716-632-1000
or by email at
auctions@blackbirdauctions.com with any
questions about removal. Persons not
removing their items by the deadline of
May 10, 2017 may be charged a holdover
fee to obtain access to the property.**

NO WARRANTIES:

Every item and lot in this auction is sold: (a) "AS-IS, WHERE-IS AND WITHOUT RECOURSE," and (b) with no warranties, guarantees or representation of any kind or variety, whether expressed, implied or otherwise.

PAYMENT:

ALL PURCHASES MUST BE PAID IN FULL ON THE DAY OF THE AUCTION. Payment on site may be made by cash, certified funds or wire transfer (instructions on request). Credit card purchases up to \$5,000 accepted (3% convenience fee applies). Company checks will be accepted only if accompanied by a letter from the issuing bank that reads: "(Bank Name) unconditionally guarantees payment to Blackbird Asset Services, LLC from (Purchasers Name) on account number _____ up to the amount of \$_____. This guarantee will be valid for purchases made at the JA Rogers / Mueller Farms Landscaping bankruptcy auction on May 6." **NO REMOVAL WILL BE ALLOWED UNLESS INVOICES ARE PAID IN FULL, PLEASE COME TO THE AUCTION PREPARED WITH YOUR BANK LETTER OF GUARANTEE IN ORDER TO REMOVE ITEMS ON SALE DAY.** Please note that this is a Saturday sale, and as such banks will not be open for same day wire transfers.

Visa and Mastercard will be accepted at this auction.

BUYER'S PREMIUM:

Auctioneer shall charge and collect from each Buyer a 12% Buyer's premium for each sale at the Auction, in addition to the purchase price as bid.

Buyers that pay by credit card will be charged a 3% convenience/credit card fee in addition to any buyer's premiums so noted.

SALES TAX:

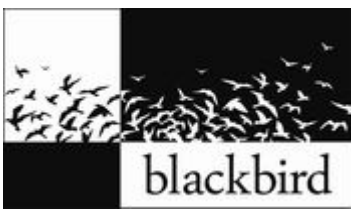
SALES TAX OF 8.00% MUST BE CHARGED TO ALL PURCHASERS UNLESS THE ITEMS ARE FOR RESALE OR USE IN FARMING. Purchaser must supply a current N.Y. FORM ST-120 OR ST-121, along with a copy of their N.Y. Sales Tax Certificate of Authority (form DTF-17-A). Out of state purchasers will be charged sales tax, which can be refunded upon receipt of a bill of lading from a common carrier evidencing out of state shipment.

Blackbird reserves the right to charge sales tax on ANY purchase and require the purchaser to file with NYS for a refund.

BUYER'S PREMIUM

Auctioneer shall charge and collect from each Buyer a 12% Buyer's premium for each sale at the Auction, in addition to the purchase price as bid.

Buyers that pay by credit card will be charged a 3% convenience/credit card fee in addition to any buyer's premiums so noted.



JA Rogers 5/6/2017

JA Rogers / Mueller Farms Landscaping bankruptcy auction. May 6, 2017

LOT #

1 Dayton bench grinder

Dayton 3/4 HP bench grinder
Quantity: 1



2 Workbench with vise

Steel workbench with 6" bench vise
Quantity: 1



3 Fire extinguishers

Lot- Fire extinguishers
Quantity: 1



4 Husqvarna chain saw

Husqvarna chain saw model 450, 20",
X-Torq
Quantity: 1



5 Husqvarna chain saw

Husqvarna chain saw model 455, 20",
Rancher
Quantity: 1



6 Husqvarna chain saw

Husqvarna chain saw model 455, 20",
Rancher
Quantity: 1



7 Concrete saw

Fast-cut diamond blade model FC7314 (SN
2012-10-032557) concrete saw
Quantity: 1



8 20 ton H press

20 ton H-frame shop press
Quantity: 1



9 Wheel chucks

Lot- Wheel chucks and cribing lumber
Quantity: 1



9A Transmission jack

Transmission jack
Quantity: 1



10 Tools, wrenches, etc.

Lot- Hand tools, wrenches, Craftsman tool
box and contents
Quantity: 1



JA Rogers 5/6/2017

JA Rogers / Mueller Farms Landscaping bankruptcy auction. May 6, 2017

LOT #**11 Makita grinder**

Makita electric angle grinder
Quantity: 1

**12 Nylon repair kit**

Nylon fuel line repair kit
Quantity: 1

**13 Air Hammer**

Sullair air hammer model Maxi7-BA (SN 68252244)
Quantity: 1

**14 Makita drill DA3010F**

Makita right angle drill model DA3010F
Quantity: 1

**15 Makita grinder 9068**

Makita angle grinder model 9068
Quantity: 1

**16 Makita grinder GA702**

Makita angle grinder model GA702
Quantity: 1

**17 3/4" Impact wrench**

Central Pneumatics 3/4" pneumatic wrench
Quantity: 1

**18 Milwaukee shear 6852-20**

Milwaukee power shear model 6852-20, 18 ga
Quantity: 1

**19 Porta-Band saw**

Milwaukee Porta-Band saw
Quantity: 1

**20 Dent/Hammer kit**

Performance tool body shop dent and hammer kit
Quantity: 1

**21 B&D saw**

Black & Decker circular saw, 7 1/4", 2 HP
Quantity: 1

**22 Torch/gauge set**

Torch and gauge set
Quantity: 1

**23 porta power**

Central Hydraulics 4 ton hydraulic puller and tool set
Quantity: 1



JA Rogers 5/6/2017

JA Rogers / Mueller Farms Landscaping bankruptcy auction. May 6, 2017

LOT #

24 Makita chop saw

Makita abrasive chop saw
Quantity: 1



31 Contents of maintenance office

Contents of maintenance office
Quantity: 1



25 Makita chop saw

Makita abrasive chop saw
Quantity: 1



32 Chains/binders/straps

Lot- Trailer hitch balls, chains, chain binders and straps
Quantity: 1



26 JNC 1224 jump pack

JNC 1224 jump and carry portable jump start pack
Quantity: 1



33 Contents of parts room

Contents of parts room
Quantity: 1



27 Westward 12/24 jump pack

Westward 12/24 portable jump start pack
Quantity: 1



34 Large fire extinguisher

Large fire extinguisher
Quantity: 1



28 Drywall squares

Lot- 48" drywall squares
Quantity: 1



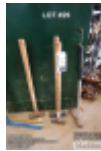
35 (4) Fire extinguishers

Lot- (4) Fire extinguishers
Quantity: 1



29 Sledge hammers

Lot- Sledge hammers
Quantity: 1



36 (4) Fire extinguishers

Lot- (4) Fire extinguishers
Quantity: 1



30 Eye wash station

Eye wash station
Quantity: 1

37 (5) Jack stands

(5) Jack stands, 6 ton
Quantity: 1



JA Rogers 5/6/2017

JA Rogers / Mueller Farms Landscaping bankruptcy auction. May 6, 2017

38 (5) Jack stands

(5) Jack stands, 6 ton
Quantity: 1



39 Eye wash station

Eye wash station
Quantity: 1



40 Cherry picker hoist

Cherry picker engine hoist
Quantity: 1



41 Walker jack

Walker pneumatic bumper jack
Quantity: 1



42 NAC portable generator

NAC portable generator set model NGK-6000H, 120/240 volt, 60 Hz, 5 Kva, gasoline powered, Honda II HP GX340 engine
Quantity: 1



43 floor jack

Rolling floor jack
Quantity: 1



44 floor jack

Pittsburgh tool 3 ton rolling floor jack
Quantity: 1



45 floor jack

Performance tool 3.5 ton rolling floor jack
Quantity: 1



46 Pressure washer/heated

Mi-T-M 3000 PSI portable pressure washer/steam cleaner model HSP-3003-3MGH (SN 15079053), 9 HP Honda GX270 gasoline engine, #1 kerosine or #2 diesel burner
Quantity: 1



47 Millermatic 252 welder

Millermatic 252 MIG welder stock #907321 (SN MC012093N), 230V, 7.5 KW, with cart
Quantity: 1



48 Battery charger

Solar charge it! Battery charger/ engine starter, 6/12 volt 40/20/5/200 amp
Quantity: 1



49 Welding Cart with hoses

Welding cart with hoses
Quantity: 1



JA Rogers 5/6/2017

JA Rogers / Mueller Farms Landscaping bankruptcy auction. May 6, 2017

LOT #**50 gear lube pump**

Gear lube pump
Quantity: 1

**51 Grease gun**

Grease gun
Quantity: 1

**52 Munters GYR-D heater**

Munters torpedo heater model GRY-D (SN M19035710), 40 WU, 140,200 BTU/Hr, #1-2 fuel oil/kerosene, 2009
Quantity: 1

**53 LB White K150 heater**

LB White-Tradesman K150 model CP150AK (SN 654438) torpedo heater, 150,000 BTU/Hr, #1 fuel oil/kerosene
Quantity: 1

**54 Rolatape RT312 measure**

Rolatape RT312 rolling tape measure
Quantity: 1

**54A Rolatape RT312 measure**

Rolatape RT312 rolling tape measure
Quantity: 1

**55 Rolatape RT312 measure**

Rolatape RT312 rolling tape measure
Quantity: 1

**56 Keeson RRT312 measure**

Keeson RRT12 rolling tape measure
Quantity: 1

**57 Bartell BR-4600 compactor**

Bartell BR-4600 (SN 590087) 19" x 34" reversable plate compactor, Honda GX390 gasoline engine
Quantity: 1

**58 Bartell BR-4600 compactor**

Bartell BR-4600 (SN 590156) 19" x 34" reversable plate compactor, Honda GX390 gasoline engine
Quantity: 1

**59 Stone RP6520 compactor**

Stone RP6520 compactor (SN 3001101), 19" x 28", gasoline powered
Quantity: 1

**60 SK compactor PC70**

SK compactor model PC70 (SN 20887), 5.5 HP Honda GX160, Honda gasoline engine
Quantity: 1



JA Rogers 5/6/2017

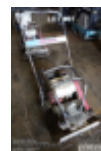
JA Rogers / Mueller Farms Landscaping bankruptcy auction. May 6, 2017

LOT #**61 Stone SM832R tamper**

Stone jumping jack tamper model SM832R
(SN 3451109), 2 cycle gasoline engine
Quantity: 1

**67 Stone compactor SFP3000**

Stone compactor SFP3000 model STP3060A
(SN 392006292), 19" x 24", 5.5 HP Honda
GX-160 gasoline engine
Quantity: 1

**62 Kango jack hammer 767**

Kango jack hammer model 767 (SN
A0201568FL), electric with cart
Quantity: 1

**68 Stone compactor SFP3001**

Stone compactor SFP3000 model STP3060A
(SN 222006164), 19" x 24", 5.5 HP Honda
GX-160 gasoline engine
Quantity: 1

**63 Little Wonder shaper 900**

Little Wonder bed shaper model 900
Hydrostatic, with 130 HP Kawasaki FH
381V gasoline engine
Quantity: 1

**69 Bartell BCF2150 compactor**

Bartell compactor model BCF2150 (SN
590693), 20" x 20" with Honda GX-160
gasoline engine
Quantity: 1

**64 Ryan aerator Lawnaire IV**

Ryan Lawnaire IV lawn aereator model
544881 (SN 93517849), Honda 4.0 HP GX120
gasoline engine
Quantity: 1

**70 Ariens Snow Blower Deluxe 28**

Ariens Snow Blower Deluxe 28 model
921030 (SN 172382), Ariens AX254 gasoline
engine
Quantity: 1

**65 Bed shaper**

Bed shaper with Honda 8.0 HP GX240
gasoline engine
Quantity: 1

**71 Toro 721E snow blower**

Toro Powerclear 721E model 38742 (SN
316015040), 21" snow blower
Quantity: 1

**66 Power compactor**

Power compactor, 17" x 21"
Quantity: 1

**72 Troy-Bilt snow blower**

Troy-Bilt Storm2620 model 31BM63P3711
(SN 1K240B30579) 26' snow blower, 208cc
gasoline engine
Quantity: 1



JA Rogers 5/6/2017

JA Rogers / Mueller Farms Landscaping bankruptcy auction. May 6, 2017

73 Ariens Snow Blower 927LE

Ariens Snow Blower 927LE model 921005 (SN 013488), with Techumsch gasoline engine
Quantity: 1

**74 Ariens Snow Blower 927LE**

Ariens Snow Blower 927LE model 921005 (SN 011191), with Techumsch gasoline engine
Quantity: 1

**75 Ariens Snow Blower Delux 28**

Ariens Snow Blower Delux 28 model 921022 (SN 088111), 28", with Braggs & Stratton 250cc gasoline engine
Quantity: 1

**76 OPEN**

OPEN
Quantity: 1

**77 White sweeper/ blower**

White power sweeper/blower with Briggs & Stratton gasoline engine
Quantity: 1

**78 Billy Goat sweeper/ blower**

Billy Goat 5 HP sweeper/blower with Briggs & Stratton gasoline engine
Quantity: 1

**79 Little Wonder blower**

Little Wonder 9 HP Optimax power blower with Briggs & Stratton gasoline engine
Quantity: 1

**80 Toro Cement mixer**

Stone/Toro portable trailer mount model 68004 (SN 314000124), cement mixer CM-658H, rotating tub, with Honda GX-240 fasoline engine
Quantity: 1

**81 Stone cement mixer**

Stone portable trailer mounted cement mixer model 855P (SN 352004375), open top, paddle style, with Honda 8.0 HP GX-240 gasoline engine
Quantity: 1

**82 Perma-Green sprayer**

Perma-Green Triumph ride on sprayer, Broadcast spreader, 572 hours, Honda GX gasoline engine
Quantity: 1

**83 Ridgid vac**

Ridgid 16 gallon 5.5 HP wet/dry vac
Quantity: 1

**84 Ridgid vac**

Ridgid wet/dry vac
Quantity: 1



JA Rogers 5/6/2017

JA Rogers / Mueller Farms Landscaping bankruptcy auction. May 6, 2017

85 Toro lawn mower

Toro 22" self propelled rotary lawn mower
Quantity: 1



92 Parts cleaner

Parts cleaner
Quantity: 1



86 Lesco spreader

Lesco walk behind broadcast spreader
Quantity: 1



93 Belts and rack

Lot- Belts and belt rack
Quantity: 1



87 Broadcast spreader

Walk behind broadcast spreader
Quantity: 1



94 workbench

workbench
Quantity: 1



88 Chapin spreader

Chapin walk behind broadcast spreader
Quantity: 1



95 Locker

Locker
Quantity: 1



89 Chapin spreader

Chapin walk behind broadcast spreader
Quantity: 1



96 OPEN

OPEN
Quantity: 1



90 Scrap steel

Lot- Scrap steel in corner
Quantity: 1



97 Eye wash station

Eye wash station
Quantity: 1



91 Oregon sharpener

Oregon lawn mower blade sharpener with blades
Quantity: 1



98 Air hose

Air hose
Quantity: 1



JA Rogers 5/6/2017

JA Rogers / Mueller Farms Landscaping bankruptcy auction. May 6, 2017

LOT #

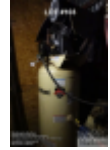
99 Trouble lights

Trouble lights
Quantity: 1



103 Air Compressor

Ingersoll Rand air compressor vertical tank model 2340 (SN 4001528) 5HP (located in closet)
Quantity: 1



100 4 wheel dollies

Lot- 4 wheel dollies
Quantity: 1



104 Shelving

Steel shelving, 43" x 51"
Quantity: 1



101 Yamaha stereo

Yamaha stereo and speaker
Quantity: 1



105 Exhaust hose

Exhaust hose
Quantity: 1



101A Office Furniture

Office furniture lots from upstairs offices will be added as "A" lots here, which will include an offering of desks, tables, chairs, computers and more.
Quantity: 1

106 Steps

Rolling steps, 6 foot
Quantity: 1



101Z INSTRUCTIONS

Move to hallway for Dingo room
Quantity: 1



107 Welding curtains

Welding curtains
Quantity: 1



102 Contents of parts bins

Contents of parts bins including: pins, clevis, nuts and bolts/ Contents of both walls
Quantity: 1



108 Toro TX-425

Toro Dingo TX-425 model 22307 (SN 24000051), with 42" bucket, 72 hours
Quantity: 1



109 Toro TX-427

Toro Dingo TX-427 model 22322 (SN 31200108), with 4' bucket, 866 hours, 2012
Quantity: 1



JA Rogers 5/6/2017

JA Rogers / Mueller Farms Landscaping bankruptcy auction. May 6, 2017

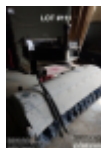
110 Toro TX-425

Toro Dingo TX-425 model 22307 (SN 260000314)
Quantity: 1



111 Toro sweeper attachment

Toro Dingo sweeper attachment
Quantity: 1



112 Toro 22429 stump grinder

Toro Dingo model 22429 (SN 31200103) stump grinder attachment, 2012
Quantity: 1



113 Toro post hole digging

Toro Dingo post hole digging attachment with 32" and 9" borers
Quantity: 1



113A Toro fork attachment

Toro Dingo fork attachment
Quantity: 1



114 Toro rototiller attachment

Toro Dingo rototiller attachment model 22445, 41" wide
Quantity: 1



115 Toro snow blower attachment

Toro Dingo 44" 2 stage snow blower attachment
Quantity: 1



116 Toro snow blower attachment

Toro Dingo 44" 2 stage snow blower attachment
Quantity: 1



117 Toro aerator attachment

Toro Dingo 48" aerator attachment
Quantity: 1



118 Toro trencher

Toro Dingo 8" wide- 40" deep trencher
Quantity: 1



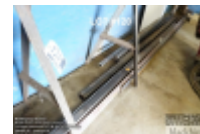
119 Plow springs, rams

Lot- Snow plow springs and rams in green bins
Quantity: 1



120 Steel tubing

Lot- New steel tubing/ angle plus (2) 4' x 8' sheets of 3/16" steel plus steel work horse-on ground and wall by overhead door
Quantity: 1



JA Rogers 5/6/2017

JA Rogers / Mueller Farms Landscaping bankruptcy auction. May 6, 2017

LOT #

121 2" lumber

Lot- Rough 2" lumber
Quantity: 1



126 Echo drill

Echo gas drill with 3.5" x 20" and 5" x 57" boring drills
Quantity: 1



122 Sprayer

90" sprayer
Quantity: 1

127 Shindaiwa hedge trimmer

Shindaiwa gas one sided hedge trimmer
Quantity: 1



122Z INSTRUCTIONS

Move to Cage Area
Quantity: 1



128 Stihl trimmer HS81T

Stihl HS81T gas hedge trimmer
Quantity: 1



123 Shindaiwa trimmer and attachments

Lot- Shindaiwa PB 270 trimmer with 22" sweeper attachment, Alo included- 4 additional 22" sweeper attachments
Quantity: 1



129 Stihl trimmer H580

Stihl H580 gas hedge trimmer
Quantity: 1



124 Husqvarna trimmer

Husqvarna trimmer with 22" hedge trimmer attachment
Quantity: 1



130 Husqvarna 226HD75S trimmer

Husqvarna 226HD75S gas hedge trimmer
Quantity: 1



125 Stihl trimmer

Stihl trimmer with 21" hedge trimmer attachment
Quantity: 1



131 Stihl trimmer

Stihl HS81R gas hedge trimmer
Quantity: 1



132 Husqvarna cement saw

Husqvarna K760 14" demo gas saw, cement saw
Quantity: 1



JA Rogers 5/6/2017

JA Rogers / Mueller Farms Landscaping bankruptcy auction. May 6, 2017

133 Speedlight cement saw

Speedlight Diamond Products, SC 7314, 14"
Speedi cut cement demo gas saw
Quantity: 1



140 Shindaiwa ES2510 blower

Shindaiwa ES2510 gas blower
Quantity: 1



134 Makita cement saw

Makita EK7301 14" cement demo gas saw
Quantity: 1



141 Husqvarna 125B blower

Husqvarna 125B gas blower
Quantity: 1



135 Shindaiwa ES2510 blower

Shindaiwa ES2510 gas blower
Quantity: 1



142 Husqvarna 125B blower

Husqvarna 125B gas blower
Quantity: 1



136 Shindaiwa ES2510 blower

Shindaiwa ES2510 gas blower
Quantity: 1



143 Husqvarna 125B blower

Husqvarna 125B gas blower
Quantity: 1



137 Shindaiwa ES2510 blower

Shindaiwa ES2510 gas blower
Quantity: 1



144 Husqvarna 125B blower

Husqvarna 125B gas blower
Quantity: 1



138 Shindaiwa ES2510 blower

Shindaiwa ES2510 gas blower
Quantity: 1



145 Husqvarna 125B blower

Husqvarna 125B gas blower
Quantity: 1



139 Shindaiwa ES2510 blower

Shindaiwa ES2510 gas blower
Quantity: 1



146 Wilton-Cadet bench vise

Wilton- Cadet 4.5" bench vise with 72" x
32" bowling alley top work bench
Quantity: 1



JA Rogers 5/6/2017

JA Rogers / Mueller Farms Landscaping bankruptcy auction. May 6, 2017

LOT #**147 Lasermark LM500**

Lasermark LM500 automatic leveling laser with case, tripod and grade stick
Quantity: 1

**153 Makita 9557PB**

Makita 9557PB angle grinder with case
Quantity: 1

**148 Spectra Laser**

Spectra Precision laser plane LL500C laser system with case, tripod and grade stick
Quantity: 1

**154 Makita rotary hammer**

Makita HR3851 rotary hammer drill with 2" and 1" carbide bits
Quantity: 1

**149 CST/Berger Lasermark**

CST/Berger Lasermark LM30 and LD-100N laser detector laser system with case, tripod and grade stick
Quantity: 1

**155 Makita cordless kit**

Makita DK1052D2 cordless combo kit, 18V with 2 batteries, drill driver, circular saw, light, reciprocating saw and 2 chargers
Quantity: 1

**150 Berger 135**

Berger model 135 level and transit level with case, tripod and grade stick
Quantity: 1

**156 Makita rotary hammer**

Makita HR2621 rotary hammer with drills and case
Quantity: 1

**151 David White Instruments L6-20**

David White Instruments Meridian L6-20 transit with case, tripod and grade stick
Quantity: 1

**157 Makita rotary hammer**

Makita HR2455 rotary hammer with drills and case
Quantity: 1

**152 Makita 9557PB**

Makita 9557PB angle grinder with case
Quantity: 1

**158 Makita reciprocating saw**

Makita JR3050T corded reciprocating saw with case
Quantity: 1



JA Rogers 5/6/2017

JA Rogers / Mueller Farms Landscaping bankruptcy auction. May 6, 2017

LOT #

159 Makita 5007F

Makita 5007F corded circular saw with case
Quantity: 1



160 Ryobi cordless saw

Ryobi cordless circular saw and charger
with case, no battery
Quantity: 1



161 Extension cords

Lot- Miscellaneous extension cords
Quantity: 1



162 Wagner sprayers

Lot- (2) Wagner sprayers
Quantity: 1



163 Ryobi saw, Bosch grinder

Lot- Ryobi 7 1/4" circular saw, Bosch angle
grinder and Makita drill, no battery with
charger
Quantity: 1



164 Craftsman router, Makita sander...

Lot- Craftsman router, Makita sander,
Ryobi jig saw and Makita drill-on battery
with charger
Quantity: 1



165 Metal shelving

Metal shelving, 36" x 87"
Quantity: 1



166 Safety items

Lot- Safety items including hats, vests,
chaps, shields and harness
Quantity: 1



166Z INSTRUCTIONS

Leave cage area
Quantity: 1



167 Gas cans

Lot- Gas/diesel cans in cage
Quantity: 1



168 Steel lockers

Lot- Steel lockers and contents
Quantity: 1



169 Pavetech paver cutter

Pavetech probst paver cutter, yellow
Quantity: 1



170 Paver cutter

Paver cutter
Quantity: 1



JA Rogers 5/6/2017

JA Rogers / Mueller Farms Landscaping bankruptcy auction. May 6, 2017

LOT #**171 Kold-Draft**

Kold-Draft 48" x 25" beer cooler, stainless steel
Quantity: 1

**178 Irwin tool box**

Irwin tool box with contents
Quantity: 1

**172 Steel cabinet**

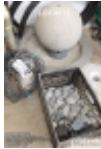
36" x 99" steel cabinet with doors
Quantity: 1

**179 Irwin tool box**

Irwin tool box- empty
Quantity: 1

**173 Granite fountain with pump**

Granite fountain with pump
Quantity: 1

**180 3 wheeled applicator**

3 wheeled applicator
Quantity: 1

**174 Greenlee 2260 job box**

Greenlee job box model 2260/ 23270 slant box, 34 cubic ft capacity
Quantity: 1

**181 Propane heater, tank**

Propane heater with tank
Quantity: 1

**175 Bin of curtains**

Bin of curtains
Quantity: 1

**182 Wisconsin Robin pump**

Wisconsin Robin 2" water pump
Quantity: 1

**176 Husky tool box and contents**

Husky 37" tool box with contents
Quantity: 1

**183 Koshin LTD pump**

Koshin LTD 2" water pump
Quantity: 1

**177 Husky tool box empty**

Husky 37" tool box with contents
Quantity: 1

**184 Redmax backpack blower**

Redmax EBZ 8500 gas backpack blower
Quantity: 1



JA Rogers 5/6/2017

JA Rogers / Mueller Farms Landscaping bankruptcy auction. May 6, 2017

185 Redmax backpack blower

Redmax EBZ 8500 gas backpack blower
Quantity: 1

**192 Arm chair, blue**

Upholstered arm chair, light blue
Quantity: 1

**186 Husqvarna backpack blower**

Husqvarna 350BT gas backpack blower
Quantity: 1

**193 Pop up canopy**

Pop up canopy
Quantity: 1

**187 Husqvarna backpack blower**

Husqvarna 350BT gas backpack blower
Quantity: 1

**194 S5002 generator**

General S5002 generator
Quantity: 1

**188 Husqvarna backpack blower**

Husqvarna 350BT gas backpack blower
Quantity: 1

**195 TSI Cheetah CH-5**

TSI Cheetah CH-5 tire bead sealer
Quantity: 1

**189 Poulan Pro PPBP30 backpack blower**

Poulan Pro PPBP30/30CC gas backpack blower
Quantity: 1

**196 Air tank**

Air tank
Quantity: 1

**190 Redmax EBZ**

Redmax EBZ 8500 gas backpack blower
Quantity: 1

**197 Speedaire air tank**

Speedaire air tank
Quantity: 1

**191 Radial arm saw and bench**

Craftsman 10" radial arm saw with bench
Quantity: 1

**198 Corner items**

Lot- Miscellaneous items in corner including tripod, spikes, grade rods, scraper...



JA Rogers 5/6/2017

JA Rogers / Mueller Farms Landscaping bankruptcy auction. May 6, 2017

198Z INSTRUCTIONS

Move to quanset hut area
Quantity: 1

**199 Chemicals and adhesive**

Lot- Chemicals and adhesive
Quantity: 1

**200 Trimmer attachments**

Lot- (3) trimmer attachments
Quantity: 1

**201 Husqvarna gas trimmer**

Husqvarna 525L gas trimmer
Quantity: 1

**202 Husqvarna gas trimmer**

Husqvarna 327L gas trimmer
Quantity: 1

**203 Husqvarna gas trimmer**

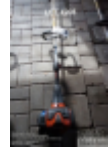
Husqvarna 525L gas trimmer
Quantity: 1

**204 Husqvarna gas trimmer**

Husqvarna 525L gas trimmer
Quantity: 1

**205 Husqvarna gas trimmer**

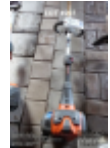
Husqvarna 525L gas trimmer
Quantity: 1

**206 Husqvarna gas trimmer**

Husqvarna 128L gas trimmer
Quantity: 1

**207 Husqvarna gas trimmer**

Husqvarna 525L gas trimmer
Quantity: 1

**208 Kawasaki gas trimmer**

Kawasaki KGT27C gas trimmer
Quantity: 1

**209 Kawasaki gas trimmer**

Kawasaki KGT27C gas trimmer
Quantity: 1

**210 Folding chairs and table**

Lot- (11) folding chairs and folding table
Quantity: 1

**211 Folding chairs**

Lot- (13) folding chairs
Quantity: 1



JA Rogers 5/6/2017

JA Rogers / Mueller Farms Landscaping bankruptcy auction. May 6, 2017

LOT #

212 Round table and chairs

Round wooden table with (3) chairs
Quantity: 1



213 time clock

Acroprint ATT310 digital time clock
Quantity: 1



214 Jackson wheel barrow

Jackson wheel barrow
Quantity: 1



215 Jackson wheel barrow

Jackson wheel barrow
Quantity: 1



216 Jackson wheel barrow

Jackson wheel barrow
Quantity: 1



217 Jackson wheel barrow

Jackson wheel barrow
Quantity: 1



218 Jackson wheel barrow

Jackson wheel barrow
Quantity: 1



219 Jackson wheel barrow

Jackson wheel barrow
Quantity: 1



220 Jackson wheel barrow

Jackson wheel barrow
Quantity: 1



221 Jackson wheel barrow

Jackson wheel barrow
Quantity: 1



222 Jackson wheel barrow

Jackson wheel barrow
Quantity: 1



223 Jackson wheel barrow

Jackson wheel barrow
Quantity: 1



224 Jackson wheel barrow

Jackson wheel barrow
Quantity: 1



225 Jackson wheel barrow

Jackson wheel barrow
Quantity: 1



JA Rogers 5/6/2017

JA Rogers / Mueller Farms Landscaping bankruptcy auction. May 6, 2017

LOT #

226 Jackson wheel barrow

Jackson wheel barrow
Quantity: 1



226Z INSTRUCTIONS

Move to barn area with lawnmowers
Quantity: 1



227 Levels

Lot- (5) levels
Quantity: 1



228 Werner ladder

Werner type 1A 10' step ladder
Quantity: 1



229 Michigan ladder

Michigan type 1A 8' double step ladder
Quantity: 1



230 Michigan ladder

Michigan type 1A 8' step ladder
Quantity: 1



231 Michigan ladder

Michigan type 1A 6' step ladder
Quantity: 1



232 Michigan ladder

Michigan type 1A 4' step ladder
Quantity: 1



233 Bil-Jax scaffolding

Bil-Jax baker scaffolding
Quantity: 1



234 Kubota zero turn mower

Kubota Z028 zero turn diesel lawn mower
ZD Pro 60 deck, mower #165
Quantity: 1



235 Hustler zero turn mower

Hustler Super Z zero turn mower XR7-60,
model 927889B (SN 08042405), 4,243 hours,
mower #7
Quantity: 1



236 Hustler zero turn mower

Hustler Super Z zero turn mower XR7-60,
model 927889B (SN N/A), 4,581 hours,
mower #8
Quantity: 1



237 Hustler zero turn mower

Hustler Super Z zero turn mower XR7-60,
model 927889B (SN N/A), 4,915 hours,
mower #9
Quantity: 1



JA Rogers 5/6/2017

JA Rogers / Mueller Farms Landscaping bankruptcy auction. May 6, 2017

LOT #**238 Woods zero turn mower**

Woods Mow'n Machine M2560 zero turn mower model M2560 (SN 705326), hours N/A, mower #01
Quantity: 1

**244 Tool cage contents**

Lot- Miscellaneous items in tool cage including shovels, rakes, pickaxles, cement tools, lopers, PVC, gas trimmer, pruner, post hole digger, low voltage cable, straps
Quantity: 1

**239 Toro mower**

Toro Grand Stand mower, 48" deck, model 74569 (SN 290003360), 1,334 hours, mower #2
Quantity: 1

**245 Tool cage contents**

Lot- Miscellaneous items in tool cage including shovels, rakes, brooms, pitch forks, pruners
Quantity: 1

**240 Hustler mower**

Hustler Trimstar mower, 48" deck, model 927426 (SN N/A), hours N/A mower #167
Quantity: 1

**246 Tool cage contents**

Lot- Miscellaneous items in tool cage including shovels, rakes, brooms, tamper, gas cans
Quantity: 1

**241 Hustler mower**

Hustler Trimstar mower, 48" deck, with grass blower, model 927426 (SN 06060940), 1,551 hours, mower #168
Quantity: 1

**246A Goosen blower**

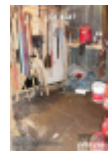
Goosen vac gas blower
Quantity: 1

**242 Exmarit mower**

Exmarit 48" deck mower model 4815K (SN 384858), mower #170
Quantity: 1

**247 Tool cage contents**

Lot- Miscellaneous items in tool cage including shovels, rakes, brooms, tamper, sledge hammer, gas cans
Quantity: 1

**243 Tool cage contents**

Lot- Miscellaneous items in tool cage including shovels, rakes, brooms, safety cones, tools, cement screeds, cement tools
Quantity: 1



JA Rogers 5/6/2017

JA Rogers / Mueller Farms Landscaping bankruptcy auction. May 6, 2017

LOT #

248 Tool cage contents

Lot- Miscellaneous items in tool cage including shovels, rakes, pitch forks, hoes, tamper, jumper cables, brooms, gas cans, hand tools, levels

Quantity: 1



254 Wheel barrows

Wheel barrows

Quantity: 1



249 Garbage cans

Lot- Garbage and grass cans

Quantity: 1



255 Fence enclosure

Fence enclosure-wooden

Quantity: 1



250 Contents of rack

Contents of rack

Quantity: 1



256 Champion heater

Champion kerosene heater

Quantity: 1



251 Wheel barrows

Wheel barrows

Quantity: 1



257 Weed block

Large rolls of weed block

Quantity: 1



252 Wheel barrows

Wheel barrows

Quantity: 1



258 Brick saw

14" Tub brick saw with stand

Quantity: 1



253 Wheel barrows

Wheel barrows

Quantity: 1



259 Brick saw

14" Tub brick saw with stand

Quantity: 1



260 Brick saw

14" Tub brick saw with stand

Quantity: 1



JA Rogers 5/6/2017

JA Rogers / Mueller Farms Landscaping bankruptcy auction. May 6, 2017

LOT #

261 Brick saw

10" Tub brick saw with stand
Quantity: 1



262 Barrel dolly

Barrel/bag dolly
Quantity: 1



263 racking

Nut and bolt racking, (2) bays
Quantity: 1



264 Racking contents

Lot- Contents of (2) bays of racking
Quantity: 1



265 Cement screeds

Lot- (3) cement screeds
Quantity: 1



266 Items on rack

Lot- wooden items and plastic edging on rack
Quantity: 1



267 Tank and sprayer

35 gallon tank and back pack sprayer
Quantity: 1



268 Lesco sprayer

Lesco 50 gallon gas sprayer- commercial plus model 01004594 (SN 704594013234Z20004)
Quantity: 1



269 Hose on reel

Hose on reel
Quantity: 1



270 Roller

Push roller
Quantity: 1



271 2 mowers

Lot- (2) push mowers
Quantity: 1



272 Ramps

Lot- Pair of ramps
Quantity: 1



273 Brut cleaner

Brut abrasive cleaner
Quantity: 1



274 Chain and bindings

Chain and bindings on wall
Quantity: 1



JA Rogers 5/6/2017

JA Rogers / Mueller Farms Landscaping bankruptcy auction. May 6, 2017

275 Contents on floor/stairway

Lot- Contents on floor and under stariway
Quantity: 1



276 Contents upstairs upper level

Lot- Contents of upper level upstairs loft area
Quantity: 1



277 Contents lower level upstairs

Lot- Contents of lower level upstairs loft area
Quantity: 1



278 OPEN

278 - 399 are OPEN LOTS
Quantity: 1



399Z INSTRUCTIONS

Move out main doors to enclosed trailers
Quantity: 1



400 Enclosed trailer

Enclosed trailer, 18' x 8', American Trailer, VIN 5N6200H2151006332M 2005
Quantity: 1



401 Enclosed trailer

Enclosed trailer, 24' x 8', Quali Trailer, VIN 4X4TSED21YN022968, 2000
Quantity: 1



402 Enclosed trailer

Enclosed trailer, 12' x 6', Cargo Trailer, VIN 4X4TSE615YN023075, 2000
Quantity: 1



403 Enclosed trailer

Enclosed trailer, 10' x 5', Cargo Trailer, VIN 4X4TSE413YN022560, 2000
Quantity: 1



404 Enclosed trailer

Enclosed trailer, 10' x 5', Dooli Trailer, VIN 1DGTS1015KM009404, 1989
Quantity: 1



405 Pavers

Lot- (6) pallets of pavers
Quantity: 1



406 OPEN

OPEN
Quantity: 1



JA Rogers 5/6/2017

JA Rogers / Mueller Farms Landscaping bankruptcy auction. May 6, 2017

LOT #

407 OPEN

OPEN
Quantity: 1



413 John Deere utility vehicle

John Deere utility vehicle
Quantity: 1



408 OPEN

OPEN
Quantity: 1



414 Kubota salter

Kubota salter
Quantity: 1



409 OPEN

OPEN
Quantity: 1



415 Bock tank

Bock safety fuel (diesel) tank with pump
Quantity: 1



410 Finn T-50 seeder

Finn hydro seeder model T-50 (SN BB-12), tow behind trailer mounted (untitled construction equipment)
Quantity: 1



416 Finn Bark blower

Finn Bark blower model BB-302 (SN SDA-842), aim and shoot mulch spreading machine. Tanedem axle trailer mounted, pintle hook, 775 hours. (untitled construction equipment)
Quantity: 1



411 Atlas Copco air compressor

Atlas Copco XAS90JD (SN H0L60207), 185 CFM air compressor, product #8972-4220-77, 116 PSIG, single axle trailer, pintle hook, 1995 (untitled construction equipment)
Quantity: 1



417 Agro Trend C-60 snow blower

Agro Trend model C-60 (SN 87309), 60" 3 point 2 stage snow blower attachment
Quantity: 1



412 UWS transfer tank

UWS diamond plate diesel fuel transfer tank
Quantity: 1



418 Woods S-7500 back hoe bucket

Woods ground breaker S-7500 3 point attachment back hoe bucket, 16" bucket
Quantity: 1



JA Rogers 5/6/2017

JA Rogers / Mueller Farms Landscaping bankruptcy auction. May 6, 2017

LOT #**419 Volvo mini excavator**

Volvo mini excavator model 281 (SN 28119964) with 60" blade, rubber tracks, EROPS heated cab, 16" hoe bucket, 1,175 hours, believed to be 1995 (untitled construction equipment)
Quantity: 1

**423 Komatsu WA320-1 front end loader**

Komatsu WA320-1 articulating hydraulic front end loader (SN A25081), Cummins engine (SN 44762584), pneumatic tires 20.5-25, 106" bucket, 1992 (untitled construction equipment)
Quantity: 1

**420 New Holland/Ford back hoe**

New Holland/Ford 655C loader- back hoe with front 90" bucket, extended hoe, 24" hoe bucket, model L3P12 (SN A418445) with heated cab, 4,027 hours, 1992 (untitled construction equipment)
Quantity: 1

**424 Fiat Allis front end loader**

Fiat Allis articulating front end loader model FA319/ FR15B (SN 595691), engine model 8365T Fiat (SN 4369), pneumatic tires 23.5-25, 110" bucket, hours unknown, 1989
Quantity: 1

**421 CAT 926 front end loader**

Caterpillar 926 articulating front end loader (SN 94Z01083) with 8' ACS Industries Asbury rock 4 in 1 bucket (hydraulic), dozing, grappling, material handling, light grading, back dragging and filling, pneumatic tires 17.5-25, 8,189 hours, 1985 (untitled construction equipment)
Quantity: 1

**425 John Deere 1070 tractor**

John Deere 1070 tractor SQ600 (SN 12-27818) tractor model 4TN84-RJX (SN CH408D004974), 1992 (untitled construction equipment BRUSH HOG SOLD SEPERATELY)
Quantity: 1

**425A Brush hog attachment**

Brush Hog 3 point tractor attachment
Quantity: 1

**422 Terex front loader**

Terex 60C articulated hydraulic front loader model 72-31B (SN 68252), 112" bucket, pneumatic 20.5-25 tires, bucket (SN 9269364), 8,022 hours (untitled construction equipment)
Quantity: 1

**426 John Deere 332 skid steer loader**

John Deere 332 skid steer loader (SN T00332B151909) with fork attachment and 7' bucket, 2,951 hours, 2007 (untitled construction equipment). NOTE: This item has delayed removal until 4:00 PM May 10.
Quantity: 1



JA Rogers 5/6/2017

JA Rogers / Mueller Farms Landscaping bankruptcy auction. May 6, 2017

LOT #**426A John Deere track**

Chain style track attachment for John Deere skid steer loader

Quantity: 1

**427 Cat 226 skid steer loader**

Cat 226 skid steer loader (SN 5FZ02405) with fork and bucket attachment, 3,435 hours, 2000 (untitled construction equipment)

Quantity: 1

**428 Cat 226B skid steer loader**

Cat 226B skid steer loader (SN CAT0226BAMJH03928) with 7' bucket, 2,211 hours, 2005 (untitled construction equipment)

Quantity: 1

**429 Office Furniture**

Office furniture lots from the main offices will be added as "A" lots here, which will include an offering of desks, tables, chairs, computers and more.

Quantity: 1

430 Chevrolet 3500HD

Chevrolet 3500HD- Vortec with Reading 12' x 7.5' stake bed with the Boss 8' 2" Power-V Smart Shield Quick Connect snow plow, dual rear wheel, 4 wheel drive, VIN 1GB3KZCG0BF255952, vehicle #72, 47,923 miles, 2011

Quantity: 1

**431 Chevrolet 2500HD**

Chevrolet 2500HD- Vortec 8' bed with bed liner and back rack with Fisher 8.5' Xtreme V Minuete Mount 2 snow plow, 4 wheel drive, VIN 1GC0KVCG1BF100169, vehicle #69, 84,769 miles, 2011

Quantity: 1

**432 Chevrolet 2500HD**

Chevrolet 2500HD- Vortec 8' bed with bed liner and back rack with Fisher 8.5' Storm Guard "V" snow plow, Minuete Mount 2, 4 wheel drive, VIN 1GCHK44K99E132142, vehicle #64, 68,603 miles, 2009

Quantity: 1

**433 Chevrolet 3500HD**

Chevrolet 3500HD- Vortec with Reading 12' x 7.5' stake bed with the Boss 8' 2" Power-V Smart Shield Quick Connect snow plow, dual rear wheel, 4 wheel drive, VIN 1GB3KZCG6BF254546, vehicle #73, 50,149 miles, 2011

Quantity: 1

**434 Chevrolet 3500**

Chevrolet 3500 truck, dual wheel drive with 9' x 7.5' stake body with Fisher Quick Connect 9' snow plow, 4 wheel drive, VIN 1GBJK34U45E337704, vehicle #49, 98,190 miles, 2005

Quantity: 1

**435 Metal dumpster**

Metal dumpster/hopper

Quantity: 1

JA Rogers 5/6/2017

JA Rogers / Mueller Farms Landscaping bankruptcy auction. May 6, 2017

LOT #**436 Chevrolet 2500HD**

Chevrolet 2500HD pickup with 8' bed and bed liner, back rack with lift gate, Fisher Minuete Mount 2, 8.5' Extreme V snow plow, 4 wheel drive, VIN 1GCHK24K08E140309, vehicle #59, 102,636 miles, 2008
Quantity: 1



wheel drive, VIN 1GC3KVBG3AF111445, vehicle #68, 71,913 miles, 2010
Quantity: 1

441 Chevrolet 2500HD

Chevrolet 2500HD pickup with 8' bed, bed liner, back rack- Vortel, with the Boss 8'2" Power V Smart Shield snow plow, 4 wheel drive, VIN 1GC0KVCGBZ425501, vehicle #70, 58,437 miles, 2011
Quantity: 1

**437 Dodge Ram 1500**

Dodge Ram 1500 pickup, super cab, 6' box with bed liner, Meyer 7.5' snow plow, 4 wheel drive, VIN 3B7HF12Y4YG101642, vehicle #61, 109,759 miles, 2000
Quantity: 1

**442 Chevrolet 2500HD**

Chevrolet 2500HD pickup with 8' bed, bed liner, back rack and aluminum truck tool box, with the Boss 8'2" Power V Smart Shield snow plow, 4 wheel drive, VIN 1GC0KVCGBZ424906, vehicle #71, miles N/A, 2011
Quantity: 1

**438 Chevrolet 3500**

Chevrolet 3500 Silverado pickup, super cab, dual wheel drive, 6' stake with Smith metal works stainless steel salter, 9' Quick Connect snow plow, 4 wheel drive, VIN 1GCJK39G01E278238, vehicle #60, 89,296 miles, 2001
Quantity: 1

**443 Chevrolet Equinox LT**

Chevrolet Equinox LT SUBN, all wheel drive, maroon, VIN #2GNFLEEK5C6320703, vehicle #74, 2012
Quantity: 1

**439 Chevrolet 3500**

Chevrolet 3500 Silverado with 6' dump body, dual wheel drive, Fisher 9' Quick Connect snow plow, 4 wheel drive, VIN 1GBJK34U15E340902, vehicle #50, 94,742 miles, 2005
Quantity: 1

**444 Chevrolet Equinox LT**

Chevrolet Equinox LT SUBN, all wheel drive, trailer hitch, VIN 2CNDL43F986023047, vehicle #56, 230,340 miles, 2008
Quantity: 1

**440 Chevrolet 2500HD**

Chevrolet 2500HD pickup with 8' box and bed liner, back rack- Vortel, Fisher 8.5' Minuete Mount 2 Xtreme V snow plow, 4



JA Rogers 5/6/2017

JA Rogers / Mueller Farms Landscaping bankruptcy auction. May 6, 2017

LOT #**445 Ford F800**

Ford F800, 13.5' x 7.5' stake body, dual wheel drive with lift gate, VIN 1FDXK84A7LVA48625, vehicle #37, 82,338 miles, 1990
Quantity: 1

**450 Ford F250XL SD**

Ford F250XL super duty with back rack and SnowEx salter, Fisher Minuete Mount 2 9' snow plow, 4 wheel drive, VIN 1FTNF21L03EB18291, vehicle #40, miles N/A, 2003
Quantity: 1

**446 International 4700**

International 4700/T444E with 10' x 7.5' dump body, VIN 1HTSMABM8TH249772, vehicle #53, 253,847 miles, 1996
Quantity: 1

**451 Chevrolet 3500HD**

Chevrolet 3500HD stake truck- Vortel, 8' stake body with stainless steel salter, Fisher 8.5' XtremeV Minuete Mount 2 snow plow, 4 wheel drive, VIN 1GBJK34K27E574578, vehicle #58, 107,313 miles, 2002
Quantity: 1

**447 International 4900x2**

International dump truck model 4900x2, 10' dump body, VIN 1HTSDPPN2RH550180, vehicle #35, miles N/A, 1994
Quantity: 1

**452 Mitsubishi FE145**

Mitsubishi FE14d, D.W.D. with 14' x 8' stake body, VIN JL6BBE1S05K011101, vehicle #77, 286,911 miles, 2005
Quantity: 1

**448 Ford F800**

Ford F800 dump truck with 3.5' x 6' tool storage with 12' x 7.5' dump body, VIN 1FDXK84N2GVA50985, vehicle #52, 101,917 miles, 1986
Quantity: 1

**453 Chevrolet stake body truck**

Chevrolet stake truck with 12' x 7.5' stake body with rear double step bumper, VIN 1GBK7D1G3KV100983, vehicle #46, 111,780 miles, 1989
Quantity: 1

**449 Mitsubishi FE145**

Mitsubishi FE14d, D.W.D. with 14' x 8' stake body, VIN JL6BBE1S65K012687, vehicle #79, miles N/A, 2005
Quantity: 1

**454 GMC 2500HD**

GMC 2500HD super cab pickup with Snowex salter, Western Quick Connect 7.5' snow plow, VIN 1GTHK29U91E276681, vehicle #54, miles N/A, 2001
Quantity: 1



JA Rogers 5/6/2017

JA Rogers / Mueller Farms Landscaping bankruptcy auction. May 6, 2017

LOT #**455 GMC 3500**

GMC 3500 dump truck, dual wheel drive, 9' x 7.5' dump body, Fisher Miute Mount 2 9' snow plow, VIN 1GDJK34U44E240931, vehicle #67, miles N/A, 2004
Quantity: 1

**460 1996 GMC**

GMC van. 15' box truck, vehicle #75, VIN J8DC4B1K5T7005752, miles NA, 1996
Quantity: 1

**456 Ford F800**

Ford F800 dump truck with dump body and salter, 10' snow plow, VIN 1FDPF82C8WVA21589, vehicle #45, miles N/A, 1998
Quantity: 1

**461 1994 F350**

Ford F350 XL dump truck, VIN 1FDKF38MNRNA43400 as is no title
Quantity: 1

**457 Chevrolet 2500**

Chevrolet 2500 pickup truck, 4x4, 8' box, VIN 1GCGK24R6YR112306, vehicle #31, miles NA, 2000
Quantity: 1

**462 1995 F150**

Ford F150 pickup, 8' box, vehicle #42, VIN 1FTZF1826XNA75400, miles na, 1995
Quantity: 1

**458 International S1700**

International S1700 stake truck with Smith Metal Works stainless steel salter, VIN 1HTAA17E9BHB20043, vehicle #66, miles N/A, 1981
Quantity: 1

**463 1982 Chevrolet**

Chevrolet pickup flat bed, vehicle #65, VIN 1GBGC34M4CV112185, 1982
Quantity: 1

**459 Econoline 250**

Econoline 250 van, VIN 1FTHE24L4VHA55029, vehicle #78, miles N/A, 1997
Quantity: 1

**464 Tandem axle trailer**

25' x 8' tandem axle 2000 Dynaweld beaver tail trailer, VIN 4U161AEX8Y1039345, trailer #42, 2000
Quantity: 1

**465 Dump trailer**

10' x 6' Cam dump trailer, VIN 5JPBU142X4P008964, trailer #44, 2004
Quantity: 1



JA Rogers 5/6/2017

JA Rogers / Mueller Farms Landscaping bankruptcy auction. May 6, 2017

LOT #

466 Utility trailer

16' x 6.5' Master Tow utility trailer with drop gate, VIN 4DFLT16244N066720, trailer #45, 2004
Quantity: 1



467 Utility trailer

16' x 6.5' American utility trailer with drop gate, VIN 1A9UT18S851668851, trailer #5, 2005
Quantity: 1



468 Drop ramp trailer

12' x 7' American drop gate trailer, VIN 1A9US12SX71668431, trailer #3, 2007
Quantity: 1



469 Drop ramp trailer

12' x 7' American drop gate trailer, VIN 1A9US12S871668363, trailer #6, 2007
Quantity: 1



470 16' Pusher box snow plow

16' pusher box snow plow
Quantity: 1



471 16' Pusher box snow plow

16' pusher box snow plow
Quantity: 1



472 22' Pusher box snow plow

22' pusher box snow plow
Quantity: 1



473 18' Pusher box snow plow

18' pusher box snow plow
Quantity: 1



474 16' Pusher box snow plow

16' pusher box snow plow
Quantity: 1



475 10' Pusher box snow plow

10' pusher box snow plow
Quantity: 1



476 10' Pusher box snow plow

10' pusher box snow plow
Quantity: 1



477 14' Pusher box snow plow

14' pusher box snow plow
Quantity: 1



478 HLA3000 tractor snow plow

9' HLA3000 tractor hydraulic snow plow
Quantity: 1



JA Rogers 5/6/2017

JA Rogers / Mueller Farms Landscaping bankruptcy auction. May 6, 2017

LOT #

479 Tractor snow plow

9' hydraulic tractor snow plow
Quantity: 1



486 3 mowers

Lot- (3) lawn mowers
Quantity: 1



480 Shrubs/ Plants

Lot- Miscellaneous shrubs/plants
Quantity: 1



487 Blower for mower

Grass blower for mower
Quantity: 1



481 Greenhouse frame

Greenhouse frame, 34' x 24'
Quantity: 1



488 Wheel barrows

Lot- (6) wheel barrows
Quantity: 1



482 Fisher plow

Fisher snow plow, 9'
Quantity: 1



489 Tarps

Lot- Tarps
Quantity: 1



483 Cement, forms, stakes...

Lot- Cement, forms, stakes, lumber, safety cones
Quantity: 1



490 Ariens blower

Ariens 1027LE snow blower, not running
Quantity: 1



484 Suction hose

Suction hose, 2"
Quantity: 1



491 Ariens blower

Ariens Deluxe 30 snow blower, not running
Quantity: 1



485 Lumber

Thick slab of lumber, 2"
Quantity: 1



492 Ariens blower

Ariens 1027LE snow blower, not running
Quantity: 1



JA Rogers 5/6/2017

JA Rogers / Mueller Farms Landscaping bankruptcy auction. May 6, 2017

LOT #

493 Snow Blower

Troy Bilt Storm 2620 snow blower
Quantity: 1



494 Ariens Deluxe 28 Snow Blower

Ariens Deluxe 28 Snow Blower
Quantity: 1



495 Ariens 1027LE Snow Blower

Ariens 1027LE Snow Blower
Quantity: 1



496 Yamaha Golf Cart

Yamaha gas golf cart - DELAYED
REMOVAL UNTIL MAY 10, 4:00 PM
Quantity: 1



497 Utility ramps

Utility ramps
Quantity: 1



498 OPEN LOT

OPEN
Quantity: 1



499 Brick

Lot- Manufactured brick
Quantity: 1



500 Pavers, bricks

Lot- (5) pallets of pavers, bricks
Quantity: 1



500A Steel bin, fence...

Lot- Steel bin, black fence, loader tires,
water tank
Quantity: 1



500B 3 Snow plows

Lot- (3) snow plows
Quantity: 1



500C Plant pots

Lot- Plant pots
Quantity: 1



501 Shed contents

Lot- Contents of shed including paver
borders
Quantity: 1



502 Pavers, bricks, pallets

Lot- Pavers, bricks, 8 pallets marked with
white paint on pallets
Quantity: 1



JA Rogers 5/6/2017

JA Rogers / Mueller Farms Landscaping bankruptcy auction. May 6, 2017

504 Pavers, bricks, pallets

Lot- Pavers, bricks, 39 pallets marked with white paint on pallets
Quantity: 1



505 Pavers, bricks, pallets

Lot- Pavers, bricks, 29 pallets marked with orange paint on pallets
Quantity: 1



506 Pavers, bricks, pallets

Lot- Pavers, bricks, 27 pallets marked with white paint on pallets
Quantity: 1



507 Pavers, bricks, pallets

Lot- Pavers, bricks, 27 pallets marked with green paint on pallets
Quantity: 1



508 Pavers, bricks, pallets

Lot- Pavers, bricks, slate, 39 pallets marked with orange paint on pallets
Quantity: 1



509 Pavers, bricks, pallets

Lot- Pavers, bricks, slate, walls 17 pallets marked with yellow paint on pallets
Quantity: 1



510 Stone

Lot- Stone
Quantity: 1



511 Stone

Lot- Stone
Quantity: 1



512 Stone

Lot- Stone
Quantity: 1



513 Stone

Lot- #2 Round Stone
Quantity: 1



514 Stone

Lot- #2 Washed
Quantity: 1



515 Stone

Lot- Runner crush stone Stone
Quantity: 1



516 Hinker salter

Hinker salter
Quantity: 1



JA Rogers 5/6/2017

JA Rogers / Mueller Farms Landscaping bankruptcy auction. May 6, 2017

LOT #

517 Cement block partition

Cement block partition walls and canvas
and tubing structure

Quantity: 1



518 Trakmat work surfaces

Lot- 8' Trakmat work surfaces

Quantity: 1



519 Salt

Lot- Salt

Quantity: 1



520 Silver trailer contents

Lot- Contents of silver trailer with drain
hose and snow plow to the left of the trailer

Quantity: 1



520A Mulch

Lot- Mulch

Quantity: 1



521 Filer, pipe, trailer contents

Lot- filter, PVL pipe. Contents of blue trailer

Quantity: 1



522 Sand

Lot- Sand

Quantity: 1

