

CATALOG

blackbird

Chemical Synthesis Pilot Plant

147 State Hwy 320
Norwich, NY 13815

Online Auction Only
Bidding Closes June 11, 12:00 NOON EDT
(soft closing)



Blackbird Asset Services, LLC
5586 Main Street Suite 204
Williamsville, NY 14221
716-632-1000
www.blackbirdauctions.com

Auction Bidder Agreement

Bidder and Auctioneer agree that the Terms and Conditions listed below shall govern this Auction sale:

1. All persons seeking to register to bid must present a valid credit card to register online. In addition, Auctioneer reserves the right to verify the validity of all cashier's checks or certified funds drawn from lending institutions.
2. The "Bidder" becomes a "Buyer" upon the closing of the lot and the Auctioneer's acceptance of their bid on one or more items in the Auction sale.
3. ALL PURCHASES MUST BE PAID IN FULL WITHIN 48 HOURS OF THE AUCTION CLOSING ONLINE. You will receive an invoice via email with your winning bids immediately following the auction. Payment may be made by ACH or wire transfer (instructions on invoice), cash will NOT be accepted at the auction site. MasterCard and Visa accepted via phone up to \$5,000. All purchases subject to a 15% buyer's premium.
4. Items left unpaid for more than 48 hours will be resold at the risk and expense of the Buyer. In the event that a Buyer fails to pay the entire purchase price (in addition to the Buyer's premium and any applicable tax) within 48 hours or otherwise fails to comply with these Terms and Conditions, Auctioneer and the Seller will retain any deposit paid without notice. Auctioneer and the Seller reserve all rights at law or equity including the right to resell such items without notice, and the defaulting Buyer shall be liable to Auctioneer and Seller for any resulting deficiency, including costs incurred in storing and reselling such items.
5. Auctioneer shall charge and collect from each Buyer a Buyer's premium of 15% for each sale at the Auction, in addition to the purchase price as bid.
6. All items in the Auction shall be sold to the highest bidder; provided, however, that some items may be auctioned with minimum reserve prices, and/or subject to Seller's right of confirmation. Auctioneer reserves the right to reject any bid that is only a minimal increase over the preceding bid, that is not commensurate with the value of the item being offered or that Auctioneer believes was made illegally or in bad faith. Further, Auctioneer may bid at the Auction either for its own account or on behalf of the Seller or a third party. All sales are final. No returns or refunds will be permitted for any reason whatsoever.
7. Collection of applicable taxes will be in accordance with the laws of the State of New York, County of Chenango, and items in this sale may be subject to U.S. export control regulations.
8. REMOVAL: Due to the complex nature of this offering, all rigging and removal for this auction will be restricted to A&A Rigging. All rigging and loading prices are clearly marked in the catalog and will be added to your invoice at checkout, please bid accordingly. All purchases must be removed no later than July 31, 2013. Note: All buyers shall contract directly with A&A and Blackbird is not a party to the rigging or removal process. Blackbird is acting as a collection agent only and not responsible for the acts of the rigging contractor. Buyer agrees to indemnify and hold harmless Blackbird Asset Services, LLC from any and all claims or actions that may arise from any rigging process. Items marked in the catalog with an (*) may be hand carried out by the purchaser on June 17-19 8:00AM-4:00PM ONLY. Items left after this date will be subject to the stated rigging charge and must be facilitated via A&A. A&A Rigging can be reached at (215) 428-1100.
9. The Buyer becomes fully responsible for, and assumes all risk of loss and damage to items purchased until items are removed from the Auction site whether or not the removal deadline has passed. If the Buyer does not remove an item within the announced removal period, Auctioneer and the Seller may, in their sole discretion, deem the item to have been abandoned by the Buyer and the Buyer will have no further rights with respect to the item.
10. In the event of any dispute concerning the winning bid price for an item, the record kept by Auctioneer shall control. In any dispute between two or more bidders, the Auctioneer's decision shall be absolute and final.
11. ALL ITEMS ARE SOLD AS IS, WHERE IS AND WITH ALL FAULTS. NEITHER SELLER NOR AUCTIONEER MAKES ANY WARRANTY, EXPRESS OR IMPLIED, AS TO THE NATURE, QUALITY, VALUE OR CONDITION OF ANY ITEM. AUCTIONEER AND SELLER EXPRESSLY DISCLAIM ANY WARRANTY OF MERCHANTABILITY, FITNESS FOR A PARTICULAR PURPOSE OR NON-INFRINGEMENT. Catalog descriptions and all information used in advertising is believed accurate however not guaranteed and buyers are advised to inspect before purchase.
12. The aggregate respective liability of Seller or Auctioneer in respect of any other loss or damage suffered by a Buyer and arising out of or in connection with these Terms and Conditions or arising out of or in any way connected with a Buyer's participation in the Auction, whether in contract, tort (including negligence) or for breach of statutory duty or in any other way, shall not exceed (i) in the case of the Seller, the amount of the purchase price paid by the Buyer; and (ii) in the case of the Auctioneer, the Buyer's premium paid by the Buyer, in each case in respect of the goods which are the subject of the claim.
13. Computers, drives and other electronic equipment may contain copywritten software that is governed by a license agreement issued to a third party. In such event the Buyer acknowledges that said software and license agreement(s) are not included in their purchase(s). Buyer guarantees the destruction of any personally identifiable information that may be stored on such devices, and shall indemnify and hold harmless Blackbird Asset Services, LLC and their Seller from any claims, suits or other actions brought against them that relates in any way to personal identifiable information.
14. Buyers acknowledge that an Auction site or the Seller's site is a potentially dangerous place. Flammable, noxious, corrosive and pressurized substances may be present. Heavy equipment may be operated, and electrical circuits may be live. Every person enters such site at his or her own risk with notice of the condition of the premises and the activities that will be or have been conducted on the premises. Buyers shall so advise their agents and employees. No person shall have any claim against Auctioneer, the Seller or their respective agents or employees for any injuries sustained or for damages to or loss of person or property that may occur at such site.
15. These Terms and Conditions are incorporated and merged with any sale specific Terms and Conditions that may be distributed with the sale catalog and/or announced by the Auctioneer at the time and place of sale.

(terms for Chem Synthesis Pilot Plant auction, June 11, 2013)

NO WARRANTIES:

Every item and lot in this auction is sold: (a) “AS-IS, WHERE-IS AND WITHOUT RECOURSE,” and (b) with no warranties, guarantees or representation of any kind or variety, whether expressed, implied or otherwise.

PAYMENT:

ALL PURCHASES MUST BE PAID IN FULL WITHIN 48 HOURS OF THE AUCTION CLOSING ONLINE. You will receive an invoice via email with your winning bids immediately following the auction. Payment may be made by ACH or wire transfer (instructions on invoice), cash will NOT be accepted at the auction site. MasterCard and Visa accepted via phone up to \$5,000. All purchases subject to a 15% buyer's premium.

SALES TAX:

All purchases subject to 8% sales tax unless purchaser supplies auctioneer with valid tax exemption documentation. Out of state purchasers may be entitled to a sales tax refund *after* a bill of lading proving their purchases were shipped out of state by a third party carrier. Auctioneer reserves the right to charge sales tax to any purchaser and require purchaser to seek a refund from the state taxing authority.

BUYER'S PREMIUM

**A BUYER'S
PREMIUM OF
15% APPLIES
TO ALL
PURCHASES.**

REMOVAL INFO:

Due to the complex nature of this offering, all rigging and removal for this auction will be restricted to A&A Rigging. All rigging and loading prices are clearly marked in the catalog and will be added to your invoice at checkout, please bid accordingly. All purchases must be removed no later than July 31, 2013. Note: All buyers shall contract directly with A&A and Blackbird is not a party to the rigging or removal process. Blackbird is acting as a collection agent only and not responsible for the acts of the rigging contractor. Buyer agrees to indemnify and hold harmless Blackbird Asset Services, LLC from any and all claims or actions that may arise from any rigging process. Items marked in the catalog with an (*) may be hand carried out by the purchaser on June 17-19 8:00AM-4:00PM ONLY. Items left after this date will be subject to the stated rigging charge and must be facilitated via A&A. A&A Rigging can be reached at (215) 428-1100.

Items that can be hand carried are available for individual pick-up at no charge between 8:00AM-4:00PM June 17-19 ONLY and are noted with an asterisk (*) next to the rigging price in the catalog. Hand-carry items left after this date will be subject to the listed removal charge.

Chemical Synthesis Pilot Plant 6/10/2013-6/11/2013

LOT #

1 **Inv#: 5652 Scale**

Fairbanks H903051ER (sn H11435) 450x2kg capacity 9 volt, battery operated floor scale with charger
Rigging Charge: *\$35.00
Quantity: 1



6 **Inv#: 5657 Scale**

Fairbanks N90-3052 9 Volt cap with charger
Rigging Charge: *\$35.00
Quantity: 1



2 **Inv#: 5653 Scale**

Fairbanks H903051ER (sn H626076EA) 450x2kg capacity 9 volt, battery operated floor scale with charger
Rigging Charge: *\$35.00
Quantity: 1



7 **Inv#: 5658 Out**

Out
Quantity: 1

3 **Inv#: 5654 Scale**

Fairbanks H903051ER (sn H114662) 450x2kg capacity 9 volt, battery operated floor scale with charger
Rigging Charge: *\$35.00
Quantity: 1



8 **Inv#: 5659 Scale**

Sartorius Type FCT01-X (sn 18201334) battery floor scale
Rigging Charge: *\$35.00
Quantity: 1



4 **Inv#: 5655 Scale**

Fairbanks H903051ER (sn 202569) 450x2kg capacity 9 volt, battery operated floor scale with charger
Rigging Charge: *\$35.00
Quantity: 1



9 **Inv#: 5660 Scale**

Mettler/Toledo SM60 120lb cap reactor scale
Rigging Charge: *\$15.00
Quantity: 1



5 **Inv#: 5656 Scale**

Fairbanks H903051ER (sn H202568) 450x2kg capacity 9 volt, battery operated floor scale with charger
Rigging Charge: *\$35.00
Quantity: 1



10 **Inv#: 5661 Scale**

Mettler/Toledo SM15X (sn 2116087059) reactor scale
Rigging Charge: *\$15.00
Quantity: 1



11 **Inv#: 5662 Out**

Out
Quantity: 1

Chemical Synthesis Pilot Plant 6/10/2013-6/11/2013

LOT #**12 Inv#: 5663 Batteries**

Lot - (8) Fairbanks batteries
 Rigging Charge: *\$25.00
 Quantity: 1

**17 Inv#: 5668 Desktop Computer**

Dell PowerEdge 700 server, service tag # SK00001, intel Pentium 4 @ 3.2 MHz, 1024 MB RAM, Fujitsu 68 GB HD. Win Server 2003 (needs to be reinstalled)
 Rigging Charge: *\$25.00
 Quantity: 1

**13 Inv#: 5664 Scale**

Toledo model 2081 (sn 4442) 115lb cap reads in metric portable scale
 Rigging Charge: *\$50.00
 Quantity: 1

**18 Inv#: 5669 Desktop Computer**

Dell Precision Workstation 380, Service Tag # JHGRXB1, Intel Pentium D CPU @ 2.8 MHz, 1024 MB RAM, Seagate 68 GB HD, Windows XP Pro (drive wiped, needs to be reinstalled)
 Rigging Charge: *\$25.00
 Quantity: 1

**14 Inv#: 5665 Desktop Computer**

Dell Precision Workstation 380, Service Tag # 2513D91, Intel Pentium D CPU @ 2.8 MHz, 1024 MB RAM, Seagate 68 GB HD, Windows XP Pro (drive wiped, needs to be reinstalled)
 Rigging Charge: *\$25.00
 Quantity: 1

**19 Inv#: 5670 Printer**

HP DeskJet 5740 printer
 Rigging Charge: *\$25.00
 Quantity: 1

**15 Inv#: 5666 Desktop Computer**

Dell Precision Workstation 380, Service Tag # 911PWB1, Intel Pentium D CPU @ 2.8 MHz, 1024 MB RAM, Fujitsu 80 GB HD, Windows XP Pro (drive wiped, needs to be reinstalled)
 Rigging Charge: *\$25.00
 Quantity: 1

**20 Inv#: 5671 Printer**

HP DeskJet 5940 printer
 Rigging Charge: *\$25.00
 Quantity: 1

**16 Inv#: 5667 Desktop Computer**

Dell PowerEdge 700 server, service tag # SK00001, intel Pentium 4 @ 3.2 MHz, 1024 MB RAM, Fujitsu 68 GB HD. Win Server 2003 (needs to be reinstalled)
 Rigging Charge: *\$25.00
 Quantity: 1

**21 Inv#: 5672 Transmitter**

Lot- Avocent (3) transmitter and (1) daisy data system pointer
 Rigging Charge: *\$25.00
 Quantity: 1

**22 Inv#: 5673 Batteries**

LOT of (2) Emerson battery backups
 Rigging Charge: *\$25.00
 Quantity: 1



Chemical Synthesis Pilot Plant 6/10/2013-6/11/2013

LOT #**23 Inv#: 5674 Batteries**

LOT of (2) Emerson battery backups
 Rigging Charge: *\$25.00
 Quantity: 1

**24 Inv#: 5675 Misc.**

Lot- Power strips, Dell keyboard,
 connection wires
 Rigging Charge: *\$25.00
 Quantity: 1

**25 Inv#: 5676 Misc.**

Lot- (1) Myers plastic cart and (2) s/s carts
 Rigging Charge: *\$15.00
 Quantity: 1

**26 Inv#: 5677 Coater**

Glatt GCPG5 fluid bed coater, includes 7"
 wurster columns, 5 KG max charge, 22 litres
 product vol container. 440 CFM fan unit,
 55Kw
 Rigging Charge: \$1,000.00
 Quantity: 1

**27 Inv#: 5678 Drum Coater**

Thomas Engineering Accela-Cota, 24"
 drum, Serial # 524. WAITING ON BETTER
 DESCRIPTION
 Rigging Charge: \$2,500
 Quantity: 1

**28 Inv#: 5679 Reactor**

Dedietrich glass lined 300 gallon reactor,
 rated 100 psi @ 500 F internal and 90 psi @
 500 F on the jacket. 3 blade reverse curve
 impeller agitator. Dedietrich Series 10 drive.
 Serial # 66782, National Board # 7628, Built
 2005.
 Rigging Charge: \$2,900
 Quantity: 1

**29 Inv#: 5680 Heat Exchanger**

Graphilor Cubic Block 85 SQFT Heat
 Exchanger Model K 90/45. Shell Rated 75
 PSI/FV AT 350 F. Built 1992. Serial #8869,
 National Board #111.
 Rigging Charge: \$250
 Quantity: 1

**30 Inv#: 5681 Reactor**

Dedietrich glass lined 200 gallon reactor,
 rated 150 psi @ 500 F internal and 100 psi
 @ 500 F on the jacket. Lightnin series 10
 agitator, glaslok paddles. Serial # 1343,
 National Board # 318, Built 1992.
 Rigging Charge: \$2,900
 Quantity: 1

**31 Inv#: 5682 Heat Exchanger**

Graphilor Cubic Block 85 SQFT Heat
 Exchanger Model K 90/45. Shell Rated 75
 PSI AT 350 F. Built 1992, Plant # HE-26,
 Serial #8868, National Board #110.
 Rigging Charge: \$250
 Quantity: 1

**32 Inv#: 5683 Reactor**

Dedietrich 100 gallon glass lined reactor,
 rated 150 psi @ 500 F internal and 100 psi
 @ 500 F on the jacket. Cone bottom. Serial
 # 1342, National Board # 316, Built 1992.
 Rigging Charge: \$2,150
 Quantity: 1

**33 Inv#: 5684 Heat Exchanger**

Graphilor Cubic Block 38 SQFT Heat
 Exchanger Model K 40/20. Shell Rated 75
 PSI AT 350 F. Built 1992.
 Rigging Charge: \$250
 Quantity: 1



Chemical Synthesis Pilot Plant 6/10/2013-6/11/2013

LOT

34 Inv#: 5685 Reactor

Dedietrich 30 gallon glass lined reactor, rated 150 psi @ 500 F internal and 115 psi @ 500 F on the jacket. Lenzi drive, 3 blade reverse curve impeller agitator. Serial # 1339, National Board # 310, Built 1992.

Rigging Charge: \$2,150

Quantity: 1

**39 Inv#: 5690 OUT**

OUT

Quantity: 1

35 Inv#: 5686 Heat Exchanger

Graphilor Cubic Block 38 SQFT Heat Exchanger Model K 40/20. Shell Rated 75 PSI AT 350 F. Serial #8870, National Board #103.

Rigging Charge: \$250

Quantity: 1

**40 Inv#: 5691 Reactor**

American Alloy Fab hastelloy 30 gallon reactor, rated 150 psi @ 450 F internal and 125 psi @ 450 F on the jacket. Pfaudler TW drive, 4 blade turbine. Serial # AAF1989, National Board # 015

Rigging Charge: \$2,150

Quantity: 1

**36 Inv#: 5687 Reactor**

Dedietrich 50 gallon glass lined reactor, rated 150 psi @ 500 F internal and 90 psi @ 500 F on the jacket. Lenze drive, 3 blade reverse curve impeller agitator. Top Head National Board # 303, Built 1992.

Rigging Charge: \$2,150

Quantity: 1

**41 Inv#: 5692 Control Module**

Temperature control module, heating & cooling system - 30 GPM. Temp" Norm 450F./max 0 degF, Slytherm. Skid mounted with 5HP 316 SS HMD Kontro sealless pump. (TCM93). Built 1998.

Rigging Charge: \$950.00

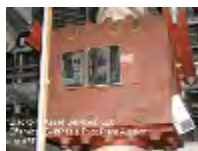
Quantity: 1

**37 Inv#: 5688 Heat Exchanger**

Graphilor Cubic Block 38 SQFT Heat Exchanger Model K 40/20. Shell Rated 75 PSI AT 350 F. Built 1992, Serial #8871, National Board #106.

Rigging Charge: \$250

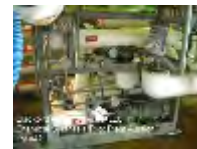
Quantity: 1

**42 Inv#: 5693 Control Module**

Temperature control module, heating & cooling system - 30 GPM. Temp" Norm 450F./max 0 degF, Slytherm. Skid mounted with 5HP 316 SS HMD Kontro sealless pump. (TCM92). Built 1998.

Rigging Charge: \$950.00

Quantity: 1

**38 Inv#: 5689 Heat Exchanger**

Graphilor Cubic Block 38 SQFT Heat Exchanger Model K 40/20. Shell Rated 75 PSI AT 350 F. Built 1992. Plant# HE-08A, Serial #8872, National Board #107.

Rigging Charge: \$250

Quantity: 1

**43 Inv#: 5694 Reactor**

Pfaudler 50 gallon glass lined reactor, rated 300 psi @ 450 F internal and 150 psi @ 450 F on the jacket. Pfaudler TW drive, 4 blade turbine agitator. Serial # J000767, National Board # 48010, Built 1995.

Rigging Charge: \$2,150

Quantity: 1



Chemical Synthesis Pilot Plant 6/10/2013-6/11/2013

LOT #**44 Inv#: 5695 Heat Exchanger**

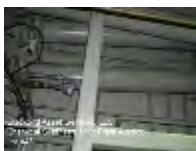
Pfaudler Glass Lined Shell & Tube Heat Exchanger. Rated 150 psi @ 450 F internal, rated 300 psi @ 450 F on the jacket. Material Glassteel 9115. Serial # 8095043-1, National Board # 66, Built 1995
Rigging Charge: \$500
Quantity: 1

**48 Inv#: 5699 Heat Exchanger**

Pfaudler Tantalum 41 SQFT Horizontal Heat Exchanger. Shell rated 150 psi and full vacuum @ 450 F, tubes rated 150 psi @ 450 F. Type BEM 08-68. 98 1/2" OAL. (37) 3/4" tubes, 0.015" thick, (Tantalum 2.5% w). (2) 2" inlet/outlet, (2) 3/4" vent/drain, (2) 4" inlet/outlet. Serial #J022726, National Board #49470, Built 1998. Weight – 425 lbs.
Rigging Charge: \$1,250
Quantity: 1

**45 Inv#: 5696 Heat Exchanger**

Pfaudler Glass Lined Shell & Tube Heat Exchanger. Rated 150 psi @ 450 F internal, rated 300 psi @ 450 F on the jacket. Material Glassteel 9115. Serial # 8095043-2, National Board # 67, Built 1995
Rigging Charge: \$500
Quantity: 1

**49 Inv#: 5700 Heat Exchanger**

Pfaudler Tantalum 20 SQFT Horizontal Heat Exchanger. Shell rated 150 psi and full vacuum @ 450 F, tubes rated 150 psi @ 450 F. Type BEM 06-66. 89 1/2" OAL. (19) 3/4" tubes, 0.015" thick, (Tantalum 2.5% w). (2) 1 1/2" inlet/outlet, (2) 3/4" vent/drain, (2) 3" inlet/outlet. Serial #J022725, National Board #49469, Built 1998. Weight – 334 lbs.
Previous Use: API Pilot Plant.
Rigging Charge: \$750
Quantity: 1

**46 Inv#: 5697 Heat Exchanger**

Pfaudler Glass Lined Shell & Tube Heat Exchanger. Rated 150 psi @ 450 F internal, rated 300 psi @ 450 F on the jacket. Material Glassteel 9115. Serial # 8095043-3, National Board # 68, Built 1995
Rigging Charge: \$500
Quantity: 1

**50 Inv#: 5701 Controller**

Daisy Data SS reactor control digital display module/workstation (south mezz)
Rigging Charge: \$250.00
Quantity: 1

**47 Inv#: 5698 Heat Exchanger**

ANDREW B. DUFFY Vertical packed column, 10" dia x 75" F.OF. (111" overall length). Carbon steel w/internal coating of nom. 40 mil. Fluoroshield and packed with (12) 10" d x 6" thick Koch Flexeramic 28P elements. Design info: 150 psig/FV@ 450 degF (Max) & -20 F min. National Board # 657 and s/n 8-98-3204, unit is lug mounted. With U-1 data report, drawings and photos. 650# empty.
Rigging Charge: \$750
Quantity: 1

**51 Inv#: 5702 Reactor**

Pfaudler glass lined 200 gallon reactor, rated for 150 psi / FV @ 450 F internal, and 150 psi / FV @ 450 F on the jacket. 9119 Dark Blue Glass. Pfaudler VMX250 drive. 40" ID x 45 1/2" Deep. 4 blade reverse curve impeller agitator. (1) 6" inlet; (1) 4 3/8" inlet; (2) 4" inlet; (5) 3" inlet. Serial # J040751/J050306, National Board #50306, Built 2000.
Rigging Charge: \$2,900.00
Quantity: 1



Chemical Synthesis Pilot Plant 6/10/2013-6/11/2013

LOT #**52 Inv#: 5703 Heat Exchanger**

Pfaunder Tantalum Horizontal 45 SQFT Heat Exchanger. Shell rated 150 psi and full vacuum @ 450 F, tubes rated 150 psi @ 450 F. Type BEM 08-76. 101 3/16" OAL. (37) 3/4" tubes, 0.015" thick, (Tantalum 2.5% w). (2) 4" inlet/outlet, (2) 2" inlet/outlet, (2) 1" vent/drain. Serial #J040814, National Board #50301, Built 2000. Weight – 530 lbs.
Rigging Charge: \$750.00
Quantity: 1



50304, Built 2000.
Rigging Charge: \$2,150
Quantity: 1

56 Inv#: 5707 Heat Exchanger

Pfaunder 20 sqft Hastelloy Horizontal Heat Exchanger. Shell rated 150 psi and full vacuum @ 450 F, tubes rated 150 psi @ 450 F. Type BEM 06-48. 71 1/2" OAL. (27) 3/4" tubes, 0.065" thick, (Hastelloy SB-626 AI C-276). (2) 1 1/2" inlet/outlet, (2) 3/4" vent/drain, (2) 3" inlet/outlet. Serial #J022724, National Board #49468, Built 1998. Weight – 265 lbs.
Rigging Charge: \$750.00
Quantity: 1

**53 Inv#: 5704 Reactor**

Pfaunder 150 gallon hastelloy reactor, rated 150 psi /FV @ 450 F internal and 150 psi /FV @ 450 F on the jacket. Shell material SB-525 C-22; Jacket material 316L. 32" ID x 48" Deep. 4 blade turbine agitator. (1) 6" handhole; (1) 4" inlet; (5) 2" inlets; (3) 3" inlet/outlet; (3) 2" jacket connections; (1) 1/2" jacket connection; (1) 3/4" jacket connection. Serial # J070452, National Board # 50372, Built 2001.
Rigging Charge: \$2,900
Quantity: 1

**57 Inv#: 5708 Control Module**

Reactor temperature control module, heating/cooling system, <-20F +350F, Syltherm XLT, skid mounted, with 5HP 316L SS HMD Kontro sealless pump (TCM094, w 94,96,97 N under mezz)
Rigging Charge: \$750.00
Quantity: 1

**54 Inv#: 5705 Heat Exchanger**

Pfaunder 42 SQFT Hastelloy Horizontal Heat Exchanger. Shell rated 150 psi and full vacuum @ 450 F, tubes rated 150 psi @ 450 F. Type BEM 08-60. 86 5/16" OAL. (50) 3/4" tubes, 0.065" thick, (Hastelloy SB-626 AI C-276, WLD). (2) 3" inlet/outlet, (2) 1-1/2" inlet/outlet, (2) 1" vent/drain. Serial #J040815, National Board #50295, Built 2000. Weight – 545 lbs.
Rigging Charge: \$750
Quantity: 1

**58 Inv#: 5709 Heat Exchanger**

Metallurgy Systems Co. L.P. (Carborundum) Impervious Graphite Shell & Tube Heat Exchanger, 34.3 SQFT, Shell rated 75 psi and full vacuum @ 340 F, tubes rated 75 psi and full vacuum @ 340 F. Type BEP 08-070 Series S Impervite. 88 1/4" OAL. (19) 1.25" tubes, 0.187" thick, (IMPERVITE (R)). (1) 3" service inlet, (1) 3" service outlet, (1) .75 NPT vent-b, (1) .75 NPT drain-e. Serial #7594, National Board #1341, Built 1992. Weight – 500 lbs. Previous Use: API Pilot Plant.
Rigging Charge: \$750
Quantity: 1

**55 Inv#: 5706 Reactor**

Pfaunder 50 gallon glass lined reactor, rated 150 psi /FV @ 450 F internal and 150 psi /FV @ 450 F on the jacket. 9119 Dark Blue Glass. Pfaunder VXX150 drive. 4 blade reverse curve impeller agitator. 24" ID x 28 3/4" Deep. Serial # J040750, National Board #



Chemical Synthesis Pilot Plant 6/10/2013-6/11/2013

LOT #**59 Inv#: 5710 Control Module**

Reactor temperature control module, heating/cooling system, <-20F +350F, Syltherm XLT, skid mounted, with 5HP 316L SS HMD Kontro sealless pump (North at mez stairs)

Rigging Charge: \$750.00

Quantity: 1



and blade have been removed for repair and are included with the unit (as is).

Rigging Charge: \$2,500

Quantity: 1

60 Inv#: 5711 Out

Out

Quantity: 1

61 Inv#: 5712 Control Module

Fulton Thermal temperature control module, Design pressure 150 psi, test pressure 100 psi, weight 1,750 # (oudoors N)

Rigging Charge: \$750.00

Quantity: 1

**64 Inv#: 5715 Centrifuge**

Tolhurst (Ametek) basket centrifuge. 30" x 18" , 316L SS, top load and unload. 500/1000 rpm, 129 lbs/cf. MN IBI, electric drive. Serial # 2T49481.

Rigging Charge: \$1,000

Quantity: 1

**62 Inv#: 5713 Centrifuge**

WESTERN STATES MODEL EZ-300 30" X 18" 316L STAINLESS STEEL BASKET CENTRIFUGE. ALL MAJOR WETTED PARTS INCLUDING BEARING HOUSING ARE CONSTRUCTED OF 316L STAINLESS STEEL & COATED WITH TEFZEL (TEFZEL COLOR GREEN), WETTED ACCESSORIES ARE CONSTRUCTED OF ALLOY C-276. 90#/CUBIC FOOT DENSITY. TOP LOAD/UNLOAD. TILTING TOP HEAD. 30 HP ELECTRIC DRIVE.

Rigging Charge: \$2,500

Quantity: 1

**66 Inv#: 5717 Dryer**

Stokes stainless steel vacuum shelf dryer. 90 SF capacity, (15) 2' x 3' stainless steel shelves. Rated 50 psi / full vacuum @ 650 F. Steam heat. MODEL 438F15, S/N 73639 together with NASH VACUUM PUMP SYSTEM, SIZE/MODEL AHF50. 3 HP, 3/60/208V AT 1755 RPM. SKID MOUNTED W STAINLESS STEEL MANIFOLD, FISHER CONTROL VALVE AND EXPLOSION PROOF CONTROLS. TEST# 92UO871

Rigging Charge: \$1,250.00

Quantity: 1

**63 Inv#: 5714 Centrifuge**

Tolhurst (Ketema) batchmaster center slung basket centrifuge. Hastelloy 32" x 20", 0-23RPM, 82#/cf density. Unit is top load/bottom dump, hinged cover. Serial # TY-56890. New 1994. Plow control shaft

**67 Inv#: 5718 Dryer**

Stokes 36 sqft vacuum shelf dryer system. All contact parts are carbon steel coated with 0.25" thick FEP Teflon. Model # 338D-6, serial number CO-73511. Built 1991. Chamber: Designed for vacuum service



Chemical Synthesis Pilot Plant 6/10/2013-6/11/2013

only, standard service to 100 microns,
Weight 2350 lb (dryer with shelves). 7 total shelves (6 usable) are 2' w x 3' deep with 2.5" spacing, rated 50 PSI (steam). Door is 304 stainless with FEP Teflon coated interior and #4 exterior finish. Hot Oil Unit: Heat Transfer Systems Model #WM450-9EP (sn J4470), built '91. Flow limits 30 gpm - 120 gpm max, temp 35 - 450 deg F, weight 550 lbs. Vac System: SIHI Liquid Ring pump model LPHB 45312 BN 117080, sn #3269861, built 1991. 7.5 HP 3/60/208v @ 1,755 RPM motor. With control panel, operation manual and photos. Rigging Charge: \$500
Quantity: 1

68 Inv#: 5719 Oven

Gruenberg ss atmospheric oven, 3 x 3 x 6, S/N 25988 with electric heaters and (1) stainless steel tray cart for (24) 2' x 3' trays with Intake and exhaust system
Rigging Charge: \$2,750
Quantity: 1

**69 Inv#: 5720 OUT**

Out
Quantity: 1

70 Inv#: 5721 Oven

Gruenberg vacuum/convection ovens, mn c/vi5h4.5m, 9KW
Rigging Charge: \$600
Quantity: 1

**71 Inv#: 5722 Oven**

Gruenberg vacuum/convection ovens, mn c/vi5h4.5m, 9KW
Rigging Charge: \$600
Quantity: 1

**72 Inv#: 5723 Reactor**

Pfaunder 500 gallon glass lined reactor, rated 25 psi @ 650 F internal and 90 psi @ 350 F on the jacket. Nucelite. Serial # E172-0959, National Board # 31220. W/ PFAUDLER DRIVE & MECHANICAL SEAL.

Rigging Charge: \$1,750
Quantity: 1

**73 Inv#: 5724 Heat Exchanger**

Graphilor Cubic Block 85 SQFT Heat Exchanger Model K 90/45. Shell Rated 75 PSI/FV AT 350 F. Built 1992. Serial #8869, National Board #111.

Rigging Charge: \$250
Quantity: 1

**74 Inv#: 5725 Out**

Out
Quantity: 1

75 Inv#: 5726 Scrubber

Sly impingent gas scrubber consisting of (2) model 215 polypopylene towers and (2) 5HP NY blowers with XP motors. The unit was designed to operate at 850 cfm, 7 gpm at 11.5 ph and 15 feet of packing would reduce the H2S from 5000 ppm to 1 ppm. -
Year Built: 1990

Rigging Charge: \$2,500
Quantity: 1

**76 Inv#: 5727 Scrubber**

Misonex MVS-25650 & 15650 75/500 scfm gas scrubber Design Conditions: Design Pressure: for both scrubbers - 1 psig/1 psig, Design Temperature: 150 Deg. F, Maximum gas flow rate to scrubber C-08A = 75 SCFM, Maximum gas flow rate to scrubber C-08B = 500 SCFM. Unit has (2) fans, each rated @ 500 CFM gas flow @ 17" W.C. static pressure with 5 HP XP motors, (2) polypropylene circulating pumps and (1)



Chemical Synthesis Pilot Plant 6/10/2013-6/11/2013

Hastelloy "C" plate heat exchanger. Built 2001. with (2) Plasticair 1433R 60, 500 CFM blowers, 3,650 RPM 3.7 BHP.
Rigging Charge: \$3,500.00
Quantity: 1

82 Inv#: 5733 Syltherm System

Complete chilled thermal liquid unit: Budzar lcw-080t-da-xp, sn e9710-1023-1, 160 GPM, syltherm, 200/400#, (2) 40 HP compressors, range minus 20F to 0F; built 1999
Rigging Charge: \$5,500.00
Quantity: 1

**77 Inv#: 5728 Chiller**

Continental chiller, water cooled, mn cxw-75fp, sn 160530-020494, R22 refrigerant, 75 hp, 3/60/460V
Rigging Charge: \$1,750
Quantity: 1

**83 Inv#: 5734 Out**

Out
Quantity: 1

**78 Inv#: 5729 Chiller**

CARLYLE COMPRESSING CO. CHILLER, MODEL 07HY060DH601F10. R22 REFRIGERANT, 40 HP
3/60/230/460V AT 1760 RPM. S/N 2295F01461, HOURS 1167.
Rigging Charge: \$500
Quantity: 1

**84 Inv#: 5735 Pump**

UNUSED GRAHAM PRECISION PUMPS GAS PUMP, TYPE 2PV2204/CH. 3 HP, EXPLOSION PROOF, 3/60/230/460V AT 1735 RPM. S/N 41845
Rigging Charge: \$25.00
Quantity: 1

**79 Inv#: 5730 Compressor**

Atlas Copco ZR30 air compressor, water cooled, 168 CFM @ 109#, 40HP, 2004
Rigging Charge: \$400
Quantity: 1

**85 Inv#: 5736 Heating/Cooling System**

30 gpm reactor temperature control module, heating/cooling system. Temperature: norm 450 Deg. F/maximum 0 Deg F. Liquid: Syltherm. Skid mounted complete with 5HP 316 S/S HMD Kontro sealess pump. W/R90 - Year Built: 1998
Rigging Charge: \$1,750
Quantity: 1

**80 Inv#: 5731 Out**

out
Quantity: 1

86 Inv#: 5737 Pump

UNUSED FYBROC PUMP (No Motor) MODEL/TYPE 1500 1X1.5X8. MAX PSI 125,80 GPM, 62 FEET HEAD.
Rigging Charge: \$25.00
Quantity: 1

**81 Inv#: 5732 Dryer**

Air Dryer
Rigging Charge: \$35.00
Quantity: 1



Chemical Synthesis Pilot Plant 6/10/2013-6/11/2013

LOT #**87 Inv#: 5738 Process**

High pressure steam and cold water circulating system for reactors (originally R26, R08, R28, R16, R01 and R02)
Rigging Charge: \$350.00
Quantity: 1

**91 Inv#: 5742 Tank**

Precision Stainless, Inc 170 Gal horizontal 304 stainless steel tank /pressure vessel. Rated 50 psi @ 550 F. 30" ID x 64" OAL. On saddles. Serial # 981456, National Board # 7814, Built 1998. Weight – 1,010 lbs.
Rigging Charge: \$350
Quantity: 1

**88 Inv#: 5739 Process**

High pressure steam and cold water circulating system (originally for reactors R26, R08, R28, R16, R01 and R02)
Rigging Charge: \$350.00
Quantity: 1

**92 Inv#: 5743 Tank**

Hebler Corp stainless steel tank, inter rated 100/FV PIS at 500F, dish top and bottom, built 2002 N/B 7442, S/N H2999
Rigging Charge: \$350
Quantity: 1

**89 Inv#: 5740 Purification System**

USP Pharmaceutical Grade De-Ionized Reverse Osmosis Water Purification System including (in process order): Lancaster water softener, Aquafine ultraviolet disinfection unit SL-10A, Megometrics model 18+ .2 GPM reverse osmosis water filter sn 4601, 500 gallon Precision Stainless storage tank, Waukesha 20 HP circulation pump, (4)Resin polishing beds, Pall 0.45 micron filter, Aquafine ultraviolet disinfection unit RBE-4R Tri-C with control, Pall 0.25 micron filter, Alleghany Bradford 25 GPM heat exchanger (stabilization), Alleghany Bradford 25 GPM heat exchanger (sanitization), (2) ABB Conductivity meters.
Full details and serial numbers available on request.
Rigging Charge: \$2,500.00
Quantity: 1

**93 Inv#: 5744 Pressure Vessel**

Northland Stainless, Inc 100 gal horizontal 316L stainless steel tank /pressure vessel. Rated 50 psi / FV @ 650 F. 2'6" ID x 3'9" OAL. On saddles. Serial # 00-13604, National Board # 2872, Built 2000. Weight – 880 lbs.
Rigging Charge: \$250
Quantity: 1

**94 Inv#: 5745 Out**

Out
Quantity: 1

90 Inv#: 5741 OUT

THIS IS OUT< PART OF LOT 89>
Quantity: 1

95 Inv#: 5746 Control Module

TDH Cryogenic Reactor Temperature Control Module 70 GPM @ 135' (-101 Deg C) mfg by Fulton Thermal, Skid mounted unit consisting of 10 HP seal-less pump by Dickow Pump Co (Min flow 12 GPM, Max flow 80.GPM), (2) Brown Fin Tube Heat exchangers: HE# 1 – 398.2 Sq Ft. SlyTherm Cooler, all 316- SS, S/N: 2566-01-1, NB# 15906; HE# 2 – 206.7Sq Ft. Cryotherm XT/SlyTherm XLT Exchanger, all 316- SS, S/N: 2566-01-2, NB# 15907.
Rigging Charge: \$1,750.00
Quantity: 1



Chemical Synthesis Pilot Plant 6/10/2013-6/11/2013

96 Inv#: 5747 Heater

HeatPro HPSCH-2 (sn 932820) hot box drum heater, 68x36x59", steam feed 200PSIG
Rigging Charge: \$650.00
Quantity: 1

**102 Inv#: 5753 Pump**

Centrifugal pump - FTI KC11PCVN401427 (sn 50970105) non-metallic centrifugal pump with Belder 1/2HP, 230/460 PH electric motor
Rigging Charge: *\$35.00
Quantity: 1

**97 Inv#: 5748 Bender**

MAC .25 HP, 115 Volts, single PH strap bender
Rigging Charge: *\$25.00
Quantity: 1

**103 Inv#: 5754 Pump**

Centrifugal pump - FTI GP22PED026018 non-metallic centrifugal pump
Rigging Charge: *\$15.00
Quantity: 1

**98 Inv#: 5749 Valve**

Fisher 657 (sn 12534520) flow valve
Rigging Charge: *\$15.00
Quantity: 1

**104 Inv#: 5755 Pump**

Centrifugal pump - FTI GPIPVD non-metallic centrifugal pump
Rigging Charge: *\$15.00
Quantity: 1

**99 Inv#: 5750 Valve**

Samson 3277-531-120-00 (sn 894932) flow valve
Rigging Charge: *\$15.00
Quantity: 1

**105 Inv#: 5756 Pump**

Strahman M-6000 portable cleaning system, 3/4HP Goulds pump sn 105853, 115/230 Volt, 1PH
Rigging Charge: *\$75.00
Quantity: 1

**100 Inv#: 5751 Valve**

Samson 3277-531-120-00 (sn 894933) flow valve
Rigging Charge: *\$15.00
Quantity: 1

**106 Inv#: 5757 Vacuum**

Ametek C88015-04 (sn 88800007) 115 Volt, 1ph portable drum vacuum
Rigging Charge: *\$25.00
Quantity: 1

**101 Inv#: 5752 Valve**

Pfaudler 21C563 (sn 113748) flow valve with burns platinum resistance thermometer
Rigging Charge: *\$15.00
Quantity: 1

**107 Inv#: 5758 Drum**

Lift-Matic ERG1/4066E (sn 48202) drum handler, 100 cap
Rigging Charge: *\$50.00
Quantity: 1



Chemical Synthesis Pilot Plant 6/10/2013-6/11/2013

LOT #**108 Inv#: 5759 Dolly**

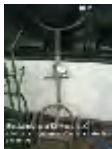
MFG 4 wheel drum dolly, 1000 cap
Rigging Charge: *\$15.00
Quantity: 1

**114 Inv#: 5765 Misc.**

Lot- Cabinet with process supplies, hoses,
filters, filter housings
Rigging Charge: *\$75.00
Quantity: 1

**109 Inv#: 5760 Dolly**

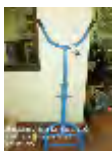
2 Wheel drum dolly
Rigging Charge: *\$15.00
Quantity: 1

**115 Inv#: 5766 Misc.**

Lot- Cabinet with process supplies,
connectors, elbows, tees, fittings
Rigging Charge: *\$75.00
Quantity: 1

**109A Inv#: 5903 Dolly**

Drum Dolly
Rigging Charge: *\$15.00
Quantity: 1

**116 Inv#: 5767 Misc.**

Lot- Cabinet with process supplies, filters,
bags, scoops
Rigging Charge: *\$75.00
Quantity: 1

**110 Inv#: 5761 Dolly**

Morse 3 wheel drum mover
Rigging Charge: *\$15.00
Quantity: 1

**117 Inv#: 5768 Out**

Out
Quantity: 1

111 Inv#: 5762 Dolly

2 Wheel moving dolly
Rigging Charge: *\$15.00
Quantity: 1

**118 Inv#: 5769 Misc.**

lot of (8) 8x4' frame mounted thermal
blankets
Rigging Charge: *\$75.00
Quantity: 1

**112 Inv#: 5763 Dolly**

2 Wheel moving dolly
Rigging Charge: *\$15.00
Quantity: 1

**119 Inv#: 5770 Pump**

NASH AT-34 vacuum pump with reliance
3HP 208-220/440
Rigging Charge: *\$100.00
Quantity: 1

**113 Inv#: 5764 Out**

Out
Quantity: 1

120 Inv#: 5771 Pump

NASH AT-34 vacuum pump with reliance
3HP 208-220/440
Rigging Charge: *\$100.00
Quantity: 1



Chemical Synthesis Pilot Plant 6/10/2013-6/11/2013

121 Inv#: 5772 Pump

Armstrong 2X1X10-4030 fluid pump with
3HP 208-230/460 Volt 3PH electric motor
Rigging Charge: *\$75.00
Quantity: 1

**127 Inv#: 5778 Flow Meter**

Niagara liquid meter, inline preset and
register in liters, model 7889
Rigging Charge: \$35.00
Quantity: 1

**122 Inv#: 5773 Pump**

Armstrong 2X1X10-4030 fluid pump with
7.5HP 208-230/460 Volt 3PH electric motor
Rigging Charge: *\$100.00
Quantity: 1

**128 Inv#: 5779 Reels**

Mounted retractable reels, 1 air and 2 spark
arrest
Rigging Charge: \$75.00
Quantity: 3

**123 Inv#: 5774 Pump**

WC pressure vessels
Rigging Charge: *\$350.00
Quantity: 2

**129 Inv#: 5780 Flow Meter**

Badger Meters model TR inline flow meter,
preset and register in liters
Rigging Charge: \$15.00
Quantity: 1

**124 Inv#: 5775 Out**

Out
Quantity: 1

130 Inv#: 5781 Flow Meter

Badger Meters model TR inline flow meter,
preset and register in liters
Rigging Charge: \$15.00
Quantity: 1

**125 Inv#: 5776 Hoist**

Chester/Ton hoist with 12' load beam and
48x48" basket
Rigging Charge: \$450.00
Quantity: 1

**131 Inv#: 5782 Flow Meter**

Niagara liquid meter, inline preset and
register in liters, model 7889
Rigging Charge: \$35.00
Quantity: 1

**126 Inv#: 5777 Spill Unit**

50x50x6" steel spill containment unit
Rigging Charge: *\$25.00
Quantity: 1

**132 Inv#: 5783 Camera**

Pelco explosion proof monitoring camera
Rigging Charge: *\$200.00
Quantity: 1



Chemical Synthesis Pilot Plant 6/10/2013-6/11/2013

LOT #**133 Inv#: 5784 Camera**

Pelco explosion proof monitoring camera
 Rigging Charge: *\$200.00
 Quantity: 1

**140 Inv#: 5791 OUT**

Lots 140-153 are out
 Quantity: 1

134 Inv#: 5785 Out

Out
 Quantity: 1

135 Inv#: 5786 Out

Out
 Quantity: 1

136 Inv#: 5787 OUT

OUT - Blower outside marked 136 now part
 of lot 74
 Quantity: 1

**137 Inv#: 5788 Blower**

B-102 N.Y blower, 18ACF (sn H06101-100)
 general purpose fan
 Rigging Charge: \$650.00
 Quantity: 1

**138 Inv#: 5789 Blower**

NEPP EF-1, 18" in, 20" out, no tag
 Rigging Charge: \$650.00
 Quantity: 1

**139 Inv#: 5790 Blower**

NEPP EF-2, 18" in, 20" out, no tag
 Rigging Charge: \$650.00
 Quantity: 1

**154 Inv#: 5792 Heat Exchanger**

Pfaunder glass lined shell & tube heat
 exchanger.. Rated 150 PSI @450 F internal,
 rated 300 PSI @450 F for jacket. Material
 Glasteel 9115. SN 8095043-3, National
 Board #68. 1995.
 Rigging Charge: \$250.00
 Quantity: 1

**155 Inv#: 5793 Heat Exchanger**

Graphilor Heat Exchanger, Model K90/45.
 85 square foot shell rated 75 PSI/FV @
 350F. 1992. SN 8869, national board 111
 Rigging Charge: \$250.00
 Quantity: 1

**156 Inv#: 5794 Heat Exchanger**

Pfaunder glass lined shell & tube heat
 exchanger.. Rated 150 PSI @450 F internal,
 rated 300 PSI @450 F for jacket. Material
 Glasteel 9115. SN 8095043-1, National
 Board #66. 1995.
 Rigging Charge: \$450.00
 Quantity: 1

**156A Inv#: 5795 Ice Buider**

GCE Icewagon in penthouse
 Rigging Charge: \$400.00
 Quantity: 1

157 Inv#: 5796 Heat Exchanger

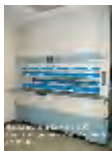
Pfaunder glass lined shell & tube heat
 exchanger.. Rated 150 PSI @450 F internal,
 rated 300 PSI @450 F for jacket. Material
 Glasteel 9115. SN 8095043-2, National
 Board #67. 1995.
 Rigging Charge: \$350.00
 Quantity: 1



Chemical Synthesis Pilot Plant 6/10/2013-6/11/2013

158 Inv#: 5797 Kardex

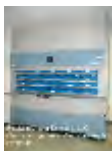
Kardex series 80 Lektriver 33 shelf indexing storage unit, 120 volt, shelves 88" wide, 15" deep; overall dimensions 102.5"w x 141"h x 60" deep; Model LK-S8 OM; SN 23310
Rigging Charge: \$3,500.00
Quantity: 1

**159 Inv#: 5798 Kardex**

Kardex series 80 Lektriver 22 shelf indexing storage unit, 120 volt, shelves 88" wide, 15" deep; overall dimensions 102.5"w x 141"h x 60" deep; Model LK-S8 OM; SN 23311
Rigging Charge: \$3,500.00
Quantity: 1

**160 Inv#: 5799 Kardex**

Kardex series 2000 Lektriver, Model LK-2000, SN 30523; 36 shelves ; overall dimensions 102.5" w x 141" h x 60" d
Rigging Charge: \$3,500.00
Quantity: 1

**161 Inv#: 5800 Racking**

Lot- (7) Sections of pallet racking, 93x48x108"
Rigging Charge: *\$420.00
Quantity: 1

**162 Inv#: 5801 Racking**

Lot- (6) sections of pallet racking, 96x48x84"
Rigging Charge: *\$420.00
Quantity: 1

**163 Inv#: 5802 Racking**

Lot- (11) sections of pallet racking, 96x48x60"
Rigging Charge: *\$770.00
Quantity: 1

**164 Inv#: 5803 Racking**

38' of chain link fence, 9' high with 6' sliding door
Rigging Charge: *\$350.00
Quantity: 1

**165 Inv#: 5804 Shelving**

Lot of (10) sections of shelving, 48x12x94"
Rigging Charge: *\$400.00
Quantity: 1

**166 Inv#: 5805 Shelving**

(5) shelf units and storage cab
Rigging Charge: *\$250.00
Quantity: 1

**167 Inv#: 5806 Stools**

Lot of (16) step stools
Rigging Charge: *\$100.00
Quantity: 1

**168 Inv#: 5807 Out**

Out
Quantity: 1

169 Inv#: 5808 Out

Out
Quantity: 1

Chemical Synthesis Pilot Plant 6/10/2013-6/11/2013

LOT #**170 Inv#: 5809 out**

out
Quantity: 1

177 Inv#: 5816 Door

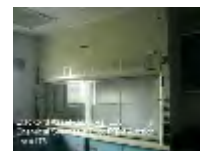
MFG Presray aluminum vacuum sealant door, 4x8
Rigging Charge: \$400.00
Quantity: 1

**171 Inv#: 5810 Tote**

Manitowoc series ice machine tote (not for human use)
Rigging Charge: \$200.00
Quantity: 1

**178 Inv#: 5817 Fume Hood**

Fisher Hamilton fume hood #30,
Rigging Charge: \$1,500.00
Quantity: 1

**172 Inv#: 5811 Ladder**

Berg 6 step portable shop ladder
Rigging Charge: *\$35.00
Quantity: 1

**179 Inv#: 5818 Fume Hood**

Fisher Hamilton fume hood
Rigging Charge: \$1,500.00
Quantity: 1

**173 Inv#: 5812 Ladder**

Lot of (3) 3 step portable shop ladder
Rigging Charge: *\$50.00
Quantity: 1

**180 Inv#: 5819 Counter/Cabinets**

Lot- S/S lab sink with base, (3) flammable cabinets, counter top and base cabinets, 29 linear feet of cabinet with 66" stainless steel sink (39" x 15" x 12" deep)
Rigging Charge: \$1,400.00
Quantity: 1

**174 Inv#: 5813 Ladder**

Lot of (3) 5-4-3 step portable shop ladder
Rigging Charge: *\$50.00
Quantity: 1

**181 Inv#: 5820 Counter/Cabinets**

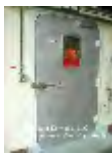
Lot- (3) glass door wall cabinets (36", 30", 30") and overhead cabinets (66", 96", 72")
Rigging Charge: \$300.00
Quantity: 1

**175 Inv#: 5814 Lockers**

Lot of (4) sections of personal lockers
Rigging Charge: *\$50.00
Quantity: 1

**176 Inv#: 5815 Door**

MFG Presray aluminum vacuum sealant door, 4x8
Rigging Charge: \$400.00
Quantity: 1

**182 Inv#: 5821 Lab**

10' Fisher Hamilton updraft walk-in fume hood, overall 108"x102"x43" deep, door opening 108"x100" (K-1 lab hood #32)
Rigging Charge: \$1,500
Quantity: 1



Chemical Synthesis Pilot Plant 6/10/2013-6/11/2013

LOT #**183 Inv#: 5822 Counter/Cabinets**

Lot- 9.5 linear feet of Fisher Hamilton lab cabinets with sink, configured as shown (K-1)

Rigging Charge: \$617.50

Quantity: 1

**187B Inv#: 5828 Lab**

Horton KiloSuite stainless steel automatic sliding lab doors, 5'w x 8'h (hallway door)

Rigging Charge: \$750.00

Quantity: 1

**184 Inv#: 5823 Lab**

Fisher Hamilton updraft walk-in fume hood, 106"x104"x54" deep, door size 106"x98" (hood #35 K-2 Lab)

Rigging Charge: \$1,500

Quantity: 1

**188 Inv#: 5829 Lab**

Fisher Hamilton 10' walk-in updraft exhaust fume hood (hood #50 K-7)

Rigging Charge: \$1,500

Quantity: 1

**185 Inv#: 5824 Lab**

Lab Fabricators 5' updraft fume hood, model SA-5EX, serial #5160C-97, over 2 30" flammable cabinets (Hood #34 K-2)

Rigging Charge: \$1,000

Quantity: 1

**189 Inv#: 5830 Lab**

Fisher Hamilton 10' walk-in updraft exhaust fume hood (hood #51 K-7)

Rigging Charge: \$1,500

Quantity: 1

**186 Inv#: 5825 Counter/Cabinets**

Fisher Hamilton lab cabinets, 17 linear feet with stainless steel sink

Rigging Charge: \$1,105.00

Quantity: 1

**190 Inv#: 5831 Out**

Out

Quantity: 1

**187 Inv#: 5826 Lab**

Horton KiloSuite stainless steel automatic sliding lab doors, 5'w x 8'h (lab K-1 door)

Rigging Charge: \$750.00

Quantity: 1

**191 Inv#: 5832 Lab**

Fisher Hamilton 10' walk-in updraft exhaust fume hood, (hood #48 K-5)

Rigging Charge: \$1,500

Quantity: 1

**187A Inv#: 5827 Lab**

Horton KiloSuite stainless steel automatic sliding lab doors, 5'w x 8'h (lab K-2 door)

Rigging Charge: \$750.00

Quantity: 1

**192 Inv#: 5833 Lab**

Fisher Hamilton 10' walk-in updraft exhaust fume hood (hood #49 K-5)

Rigging Charge: \$1,500

Quantity: 1

**187A Inv#: 5827 Lab**

Fisher Hamilton Lab cabinets, 12 linear feet with sink plus 8 linear feet glass front over cabinet wall cabinets in lab K-5

Rigging Charge: \$780.00



Chemical Synthesis Pilot Plant 6/10/2013-6/11/2013

Quantity: 1

199 Inv#: 5840 Lab

Fisher Hamilton 8' updraft fume hood
"safeaire" walk in, 87"x84"x34" deep, door
opening 87"x68" (hood #43 A-24)
Rigging Charge: \$1,250
Quantity: 1

**194 Inv#: 5835 Lab**

Fisher Hamilton 8' walk-in updraft exhaust
fume hood, 87" x 84" x 34" deep (hood #47
A-25)
Rigging Charge: \$1,250
Quantity: 1

**200 Inv#: 5841 Lab**

Fisher Hamilton 8' updraft fume hood
"safeaire" walk in, 87"x84"x34" deep, door
opening 87"x68"; date code 07-16-2002
(hood #42 A-24)
Rigging Charge: \$1,250
Quantity: 1

**195 Inv#: 5836 Lab**

Fisher Hamilton 8' walk-in updraft exhaust
fume hood, 87" x 84" x 34" deep (hood #46
A-25)
Rigging Charge: \$1,250
Quantity: 1

**201 Inv#: 5842 Lab**

Fisher Hamilton 8' updraft fume hood
"safeaire" bench top over flammable
cabinets, 87"x60"x22" deep, door opening
86"x38" (hood #41 A-24)
Rigging Charge: \$1,250
Quantity: 1

**196 Inv#: 5837 Lab**

Fisher Hamilton 8' bench type updraft
exhaust fume hood on two 48" Fisher
Hamilton Flammable cabinets (hood #45
A-25)
Rigging Charge: \$1,250
Quantity: 1

**197 Inv#: 5838 Lab**

Fisher Hamilton 7' walk-in updraft exhaust
fume hood (hood #44 A-25)
Rigging Charge: \$1,250
Quantity: 1

**202 Inv#: 5843 Lab**

Fisher Hamilton 8' updraft fume hood
"safeaire" bench top over flammable
cabinets (missing doors), 87"x60"x22"
deep, door opening 86"x38" (hood #40
A-24)
Rigging Charge: \$1,250
Quantity: 1

**198 Inv#: 5839 Counter/Cabinets**

Fisher Hamilton lab cabinets with 49 linear
feet of cabinets (16' of island), sink (lab
A-25)
Rigging Charge: \$3,185.00
Quantity: 1

**203 Inv#: 5844 Counter/Cabinets**

Fisher Hamilton lab cabinets and counter -
43 linear feet including 26' island with sink,
corner unit with sink (A-24)
Rigging Charge: \$2,795.00
Quantity: 1



Chemical Synthesis Pilot Plant 6/10/2013-6/11/2013

LOT #**204 Inv#: 5845 Lab**

Mott 8' updraft fume hood model 7551040, serial #29001-09 (04/2007); Opening 87"x30"x30" deep; on a base cabinet- flammable model 1512011, 1001 48" open shelving- 48", (hood #1, A-1)

Rigging Charge: \$1,250

Quantity: 1

**209 Inv#: 5850 Lab**

Mott 8' updraft fume hood model 7551040, serial #29001-02 (04/2007); 87"x30"x30" deep; on a base cabinet- flammable model 1512011, 1001 48" acid cabinet (hood #5, A-2)

Rigging Charge: \$1,250

Quantity: 1

**205 Inv#: 5846 Lab**

Mott 8' updraft fume hood model 7551040, serial #29001-03 (04/2007); 87"x30"x30" deep; on a base cabinet- flammable model 1512011, 1001 48" acid cabinet (hood #2, A-1)

Rigging Charge: \$1,250

Quantity: 1

**210 Inv#: 5851 Lab**

Mott 8' updraft fume hood model 7551040, serial #29001-06 (04/2007); 87"x30"x30" deep; on a base cabinet- flammable model 1512011, 1001 48" acid cabinet (hood #4, A-2)

Rigging Charge: \$1,250

Quantity: 1

**206 Inv#: 5847 Lab**

Mott 8' updraft fume hood model 7551040, serial #29001-04 (04/2007); 87"x30"x30" deep; on a base cabinet- flammable model 1512011, 1001 48" acid cabinet (hood #3, A-1)

Rigging Charge: \$1,250

Quantity: 1

**211 Inv#: 5852 Counter/Cabinets**

Fisher Hamilton lab cabinets with 59 linear feet of cabinets, 2 sinks (lab A-2)

Rigging Charge: \$3,835.00

Quantity: 1

**207 Inv#: 5848 Counter/Cabinets**

Fisher Hamilton lab cabinets with 59 linear feet of cabinets, 2 sinks (lab A-1)

Rigging Charge: \$3,835.00

Quantity: 1

**212 Inv#: 5853 Lab**

Mott 8' updraft fume hood model 7551040, serial #29001-05 (04/2007); 87"x30"x30" deep; on a base cabinet- flammable model 1512011, 1001 48" acid cabinet (hood #9, A-3)

Rigging Charge: \$1,250

Quantity: 1

**208 Inv#: 5849 Lab**

Mott 8' updraft fume hood model 7551040, serial #29001-08 (04/2007); 87"x30"x30" deep; on a base cabinet- flammable model 1512011, 1001 48" acid cabinet (hood #6, A-2)

Rigging Charge: \$1,250

Quantity: 1

**213 Inv#: 5854 Lab**

Mott 8' updraft fume hood model 7551040, serial #29001-10 (04/2007); 87"x30"x30" deep; on a base cabinet- flammable model 1512011, 1001 48" acid cabinet (hood #8, A-3)

Rigging Charge: \$1,250

Quantity: 1



Chemical Synthesis Pilot Plant 6/10/2013-6/11/2013

214 Inv#: 5855 Lab

Mott 8' updraft fume hood model 7551040, serial #29001-07 (04/2007); 87"x30"x30" deep; on a base cabinet- flammable model 1512011, 1001 48" acid cabinet (hood #7, A-3)

Rigging Charge: \$1,250

Quantity: 1

**220 Inv#: 5861 Counter/Cabinets**

Lab Counters and sinks, 27' with uppers, (lab A-14)

Rigging Charge: \$1,755.00

Quantity: 1

**215 Inv#: 5856 Out**

Out

Quantity: 1

**221 Inv#: 5862 Counter/Cabinets**

Lot- 6' x 17" s/s counter top with base, 2 drawer lateral filing cabinet, 4 glass door storage cabinets

Rigging Charge: \$300.00

Quantity: 1

**216 Inv#: 5857 Lab**

Hamilton Vectaire 10' benchtop updraft fume hood, 111"x44"x24" deep on (2) 36" and (1) 48" base cabinet; (hood #11, A-4)

Rigging Charge: \$1,500

Quantity: 1

**222 Inv#: 5863 Counter/Cabinets**

Lot- 5' x 24" s/s counter with base, sink and above cabinet

Rigging Charge: \$250.00

Quantity: 1

**217 Inv#: 5858 Lab**

Hamilton Vectaire 10' benchtop updraft fume hood, 111"x44"x24" deep on (2) 36" and (1) 48" base cabinet; (hood #12, A-4)

Rigging Charge: \$1,500

Quantity: 1

**223 Inv#: 5864 Counter/Cabinets**

Lot- 5' x 24" s/s counter with base, sink above cabinets and 2 personal lockers

Rigging Charge: \$300.00

Quantity: 1

**218 Inv#: 5859 Lab**

Mott 48" benchtop updraft fume hood model 7251040, serial #28614 under 48" flammable model 1532022 1001; (hood #10, lab A-4)

Rigging Charge: \$1,000

Quantity: 1

**224 Inv#: 5865 Counter/Cabinets**

Lot- 28' x 30" s/s counter top with sink, 3 base units 48 x 30"

Rigging Charge: \$1,400.00

Quantity: 1

**219 Inv#: 5860 Counter/Cabinets**

Fisher Hamilton lab cabinets with 2 sinks, 39.5 linear feet of cabinets plus 6.5 feet of 7'high x 22 deep tall glass front cabinets, (lab A-4)

Rigging Charge: \$2,567.50

Quantity: 1

**225 Inv#: 5866 Counter/Cabinets**

Lot- 28' x 30" s/s counter top with sink, 3 base units 48 x 30"

Rigging Charge: \$1,400.00

Quantity: 1



Chemical Synthesis Pilot Plant 6/10/2013-6/11/2013

226 Inv#: 5867 Counter/Cabinets

Lot- 16' x 30" laminated counter top, 11' of base unit and uppers
Rigging Charge: \$800.00
Quantity: 1

**232 Inv#: 5873 Office**

Lot- (2) 42" round tables and (2) table returns, (1) upper
Rigging Charge: *\$75.00
Quantity: 1

**227 Inv#: 5868 Office**

Lot- Contents of office, (3) lateral file cabinets, (2) 4 drawer cabinets, book shelf, 42" round table, (3) desktops and returns, office partitions
Rigging Charge: *\$400.00
Quantity: 1

**233 Inv#: 5874 Counter/Cabinets**

11' x 30" lab cabinets with sink and bases (Lab A-17)
Rigging Charge: \$715.00
Quantity: 1

**228 Inv#: 5869 Office**

Lot- Contents of office desk, work counter and granite top counter, 12' x 30"
Rigging Charge: \$600.00
Quantity: 1

**234 Inv#: 5875 Counter/Cabinets**

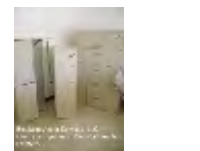
6' x 30" lab cabinets (Lab A-17)
Rigging Charge: \$390.00
Quantity: 1

**229 Inv#: 5870 Counter/Cabinets**

Lot- 10' x 24" s/s counters with double sink
Rigging Charge: \$450.00
Quantity: 1

**235 Inv#: 5876 Office**

Lot- (5) drawer lateral file cabinet, 42" round table, (4) drawer file cabinet, (2) desk returns, upper (room A-8)
Rigging Charge: *\$400.00
Quantity: 1

**230 Inv#: 5871 Counter/Cabinets**

Lot- 10' x 24" s/s counters with double sink
Rigging Charge: \$500.00
Quantity: 1

**236 Inv#: 5877 Office**

Lot- (3) 5 drawer filing cabinets, 2 desk return, upper (room A-7)
Rigging Charge: *\$250.00
Quantity: 1

**231 Inv#: 5872 Counter/Cabinets**

Lot- 15' x 38" of laminated counter top with (3) s drawer file cabinets and 8' x 30" counter top, (2) 2 drawer file cabinet and (4) chairs (counter only, not computers or printers pictured)
Rigging Charge: \$150.00
Quantity: 1

**237 Inv#: 5878 Office**

Lot- L shaped desk, 5 drawer lateral file cabinet, bookshelf, 20 drawer cabinet (room A-13)
Rigging Charge: *\$250.00
Quantity: 1



Chemical Synthesis Pilot Plant 6/10/2013-6/11/2013

LOT #**238 Inv#: 5879 Office**

Lot- 5 drawer lateral cabinet, bookshelf, return, upper, cabinet (rooms A and A-6A)
Rigging Charge: *\$250.00
Quantity: 1

**244 Inv#: 5885 Office**

Lot- (3) desks, file shelf, stand in hallway
Rigging Charge: *\$150.00
Quantity: 1

**239 Inv#: 5880 Office**

Lot- 5 drawer lateral file cabinet, 36" round table, bookshelf, return (room A-5)
Rigging Charge: *\$250.00
Quantity: 1

**245 Inv#: 5886 Office**

Lot- Reception L shaped desk, 36" round table, (5) chairs, trash cans
Rigging Charge: *\$75.00
Quantity: 1

**240 Inv#: 5881 Office**

Lot- L shaped desk, 42" round table, upper (room F-A)
Rigging Charge: *\$250.00
Quantity: 1

**246 Inv#: 5887 Office**

Lot-JCV 21" TV, Zenith VCR, Panasonic KC-B520 electronic white board, (17) chairs (room F-8)
Rigging Charge: *\$200.00
Quantity: 1

**241 Inv#: 5882 Office**

Lot- (2) 5 drawer file cabinet, 42" round table, 2 bookshelves, return and upper (room F-3)
Rigging Charge: *\$250.00
Quantity: 1

**247 Inv#: 5888 Counter/Cabinets**

Lot- Lunch room, 9' x 30" counter with sink, base and upper cabinets
Rigging Charge: \$450.00
Quantity: 1

**242 Inv#: 5883 Office**

Lot-(2) 5 drawer lateral file cabinet, 2 door cabinet, return, 5 drawer file cabinet, (room F-7 and F-7 A)
Rigging Charge: *\$250.00
Quantity: 1

**248 Inv#: 5889 OUT**

OUT
Quantity: 1

243 Inv#: 5884 Office

Lot-(4) 5 drawer lateral file cabinet, (2) 5 drawer file cabinets, 2 door cabinet, partitions (room C-4)
Rigging Charge: *\$300.00
Quantity: 1

**249 Inv#: 5890 OUT**

OUT
Quantity: 1

250 Inv#: 5891 OUT

OUT
Quantity: 1

Chemical Synthesis Pilot Plant 6/10/2013-6/11/2013

LOT #**251 Inv#: 5892 Solids Room**

Solids Containment Room
 Rigging Charge: \$7,500.00
 Quantity: 1

**257 Inv#: 5898 Liquid Nitrogen Hose**

VBZFlex 1/2" x 40' insulated liquid Nitrogen hose, braided stainless jacket, sn 07739
 Rigging Charge: *\$15.00
 Quantity: 1

**252 Inv#: 5893 Solids Room**

Solids Containment Room
 Rigging Charge: \$7,500.00
 Quantity: 1

**258 Inv#: 5899 Liquid Nitrogen Hose**

VBSFlex 1 1/4" x 45' insulated liquid Nitrogen hose, braided stainless jacket, SN 14076
 Rigging Charge: *\$15.00
 Quantity: 1

**253 Inv#: 5894 Lab**

MSA Gas Detection System - model 5800 control panel and system
 Rigging Charge: \$250.00
 Quantity: 1

**259 Inv#: 5900 Liquid Nitrogen Hose**

VBSFlex 1 1/4" x 45' insulated liquid Nitrogen hose, braided stainless jacket, sn 14077
 Rigging Charge: *\$15.00
 Quantity: 1

**254 Inv#: 5895 Solids Room**

Solids Containment Room - Room with double chambers door system, Gruenberg control, backdraft exhaust to mezzanine mounted filter containment system
 Rigging Charge: \$8,500.00
 Quantity: 1

**260 Inv#: 5901 Drum Pump**

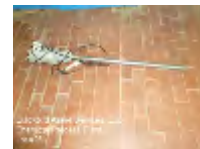
Graco air powered drum pump model 27-546, series B
 Rigging Charge: *\$15.00
 Quantity: 1

**255 Inv#: 5896 OUT**

OUT
 Quantity: 1

261 Inv#: 5902 Drum Pump

Electric drum pump
 Rigging Charge: *\$15.00
 Quantity: 1

**256 Inv#: 5897 Liquid Nitrogen Hose**

VBSFlex 1/2" x 40' insulated liquid Nitrogen hose, braided stainless jacket, sn 07738
 Rigging Charge: *\$15.00
 Quantity: 1

